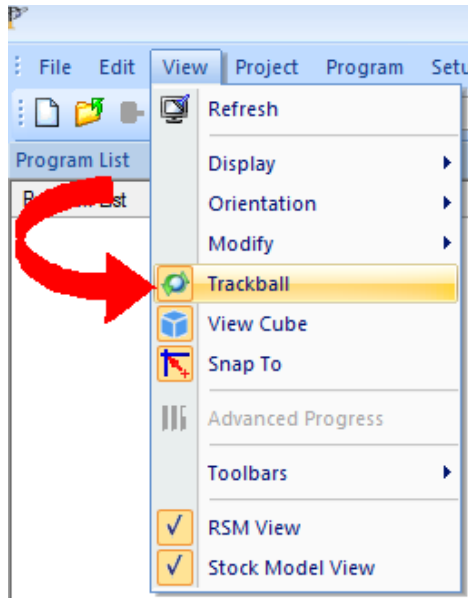


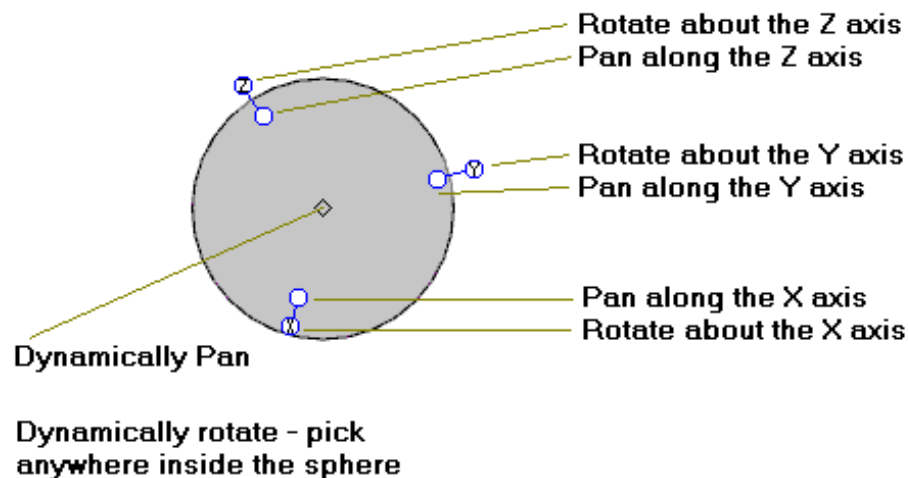
## **On Screen Track Ball Quick Reference**

Enable the track-ball:



Choose Trackball from the View menu.

Or use the keyboard shortcut 'r' (for rotate) to toggle the state of the track-ball on and off.



Right-click and hold down the right mouse button on any of the hotspots to constrain the rotation or panning of the view according to the illustration above.

Right-click and hold down the right mouse button inside the ball to rotate freely about the center of rotation of the trackball.

Shift + Left Click changes the center of rotation to wherever the cursor is located. The left click results in a "smart snap" to locate the center of rotation at a location on the part data or cutter path.