

Post Processor Installation & Configuration

What is a Post Processor?

A post-processor is a software program used to convert the internal format for a program to a format suitable for a specific CNC control.

When "Send to Controller" is used, the post-processor is executed to translate CL data into machine specific G-code. Before the "Send to Controller" function can be used, one or more post processors must be configured correctly for the CNC control.

Custom Post Processors

A custom post-processor is a stand-alone compiled executable program that is created specifically for your CNC control. They are named with the file extension '.exe'.

Custom post processors are installed by copying the '.exe' file to the 'Custom Posts' directory. If you installed Prospector in the recommended default directory, copy the post processor file to:

```
C:\Program Data\AMT Software\Prospector\Custom Posts
```

Configurable Post Processors

A configurable post-processor uses the built-in post-processing facilities of Prospector in conjunction with post-processor configuration files. These configuration files are created by AMT Software and may be altered in the field by manually creating event files and/or macro files in a text editor.

A library of configurable post processors is provided with your Prospector system. Post processor configuration files are installed in individual directories corresponding to the post name:

```
C:\Program Data\AMT Software\Prospector\posts\<>post name>
```

Where <post name> is the name of the post-processor and is a directory.

Inside the <post name> directory are the configuration files for the post-processor. There is a main configuration file of the same name as the directory, an optional event file (.e file) and optional macro file (.m file).

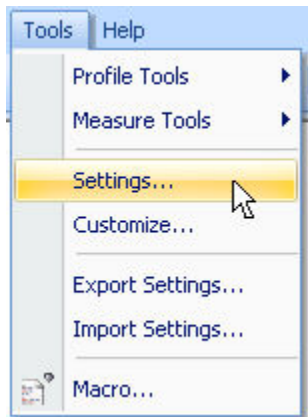
Configuring a Machine Tool in Prospector

Before you can send CNC data to the control, you must define to the Prospector system the machine tools to be supported.

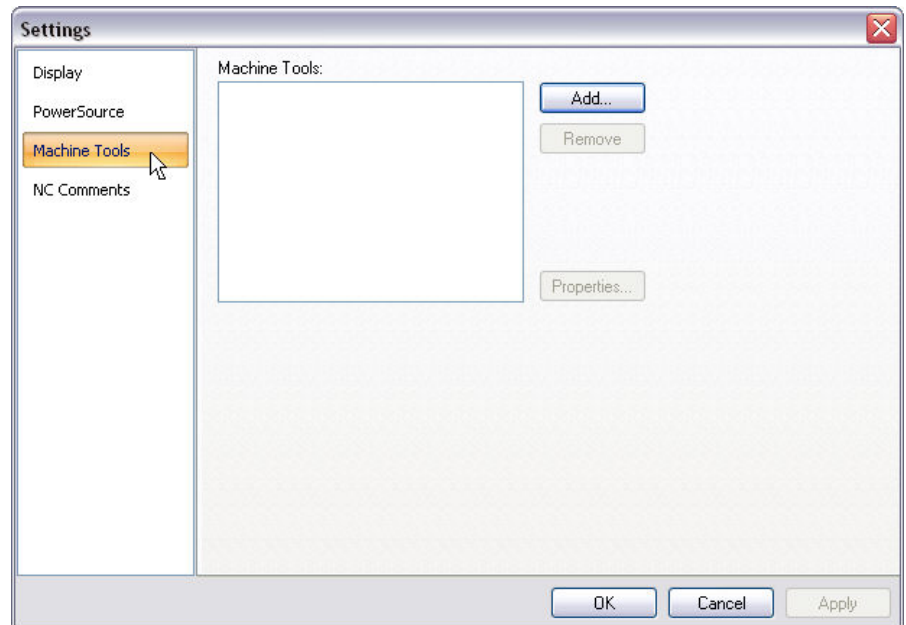
For each machine tool you wish to send CNC data to, you will define:

1. The name of the machine tool.
2. The post-processor to use for the machine.
3. The directory to place post-processed CNC data file in.
4. A file extension to use for CNC data files output by the post-processor.
5. The type of post-processor being used for the machine.
6. Any additional options to use when invoking the post-processor.

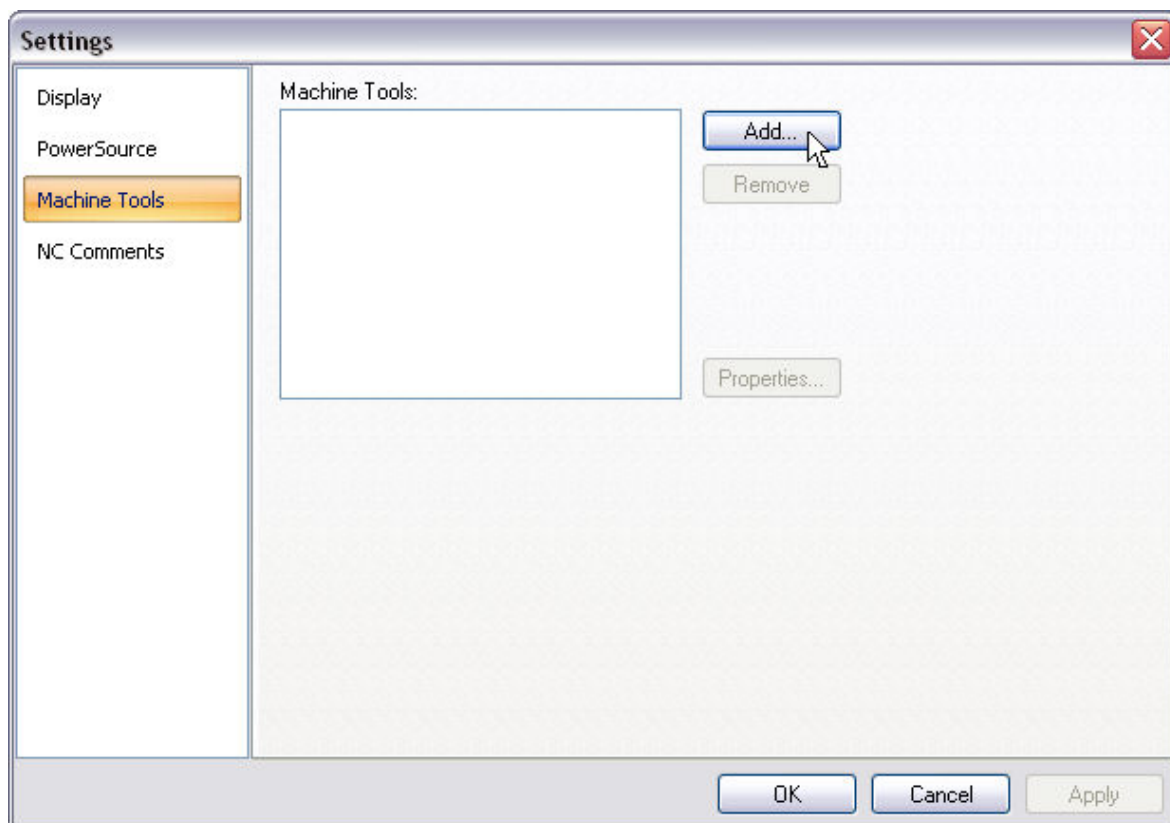
To install, remove or modify a post processor, choose the Machine Tools entry in the Tools/Settings dialog:



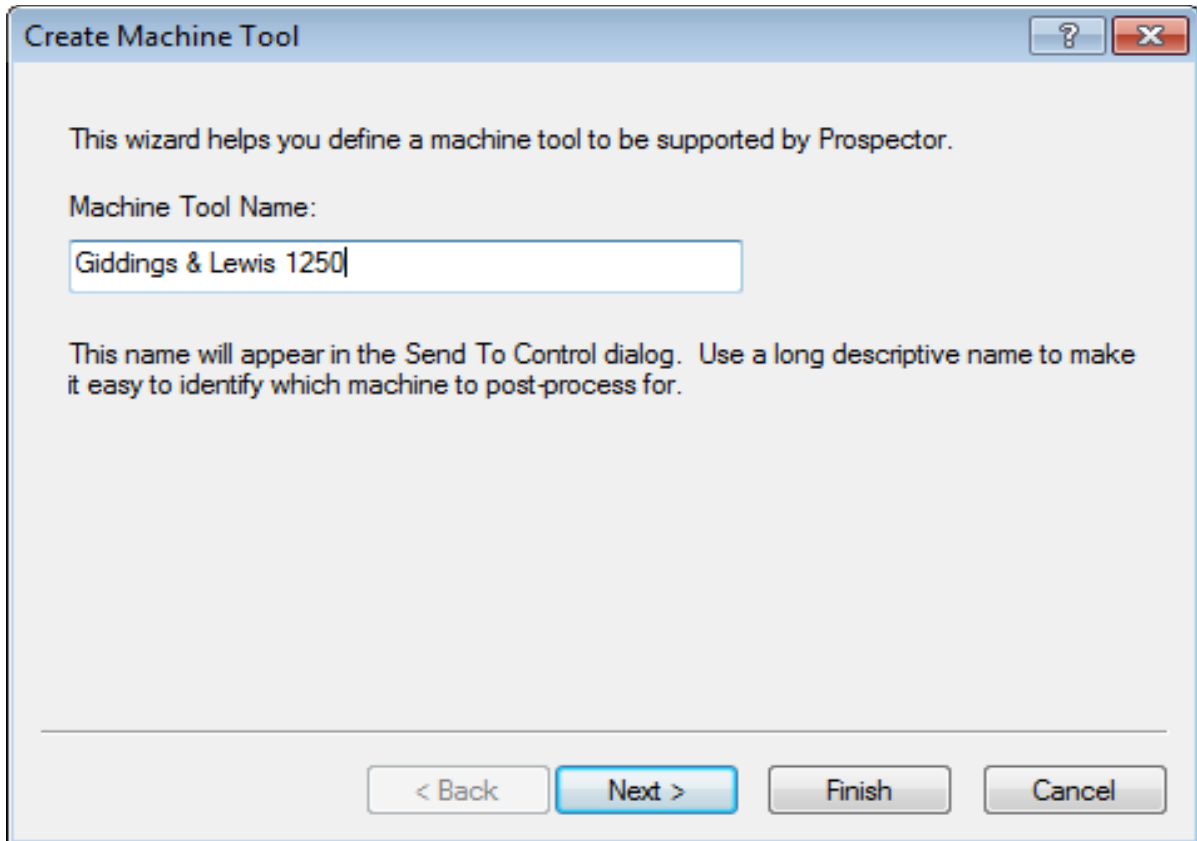
Select Tools/Settings....



Choose the Machine Tools tab to configure post processors.



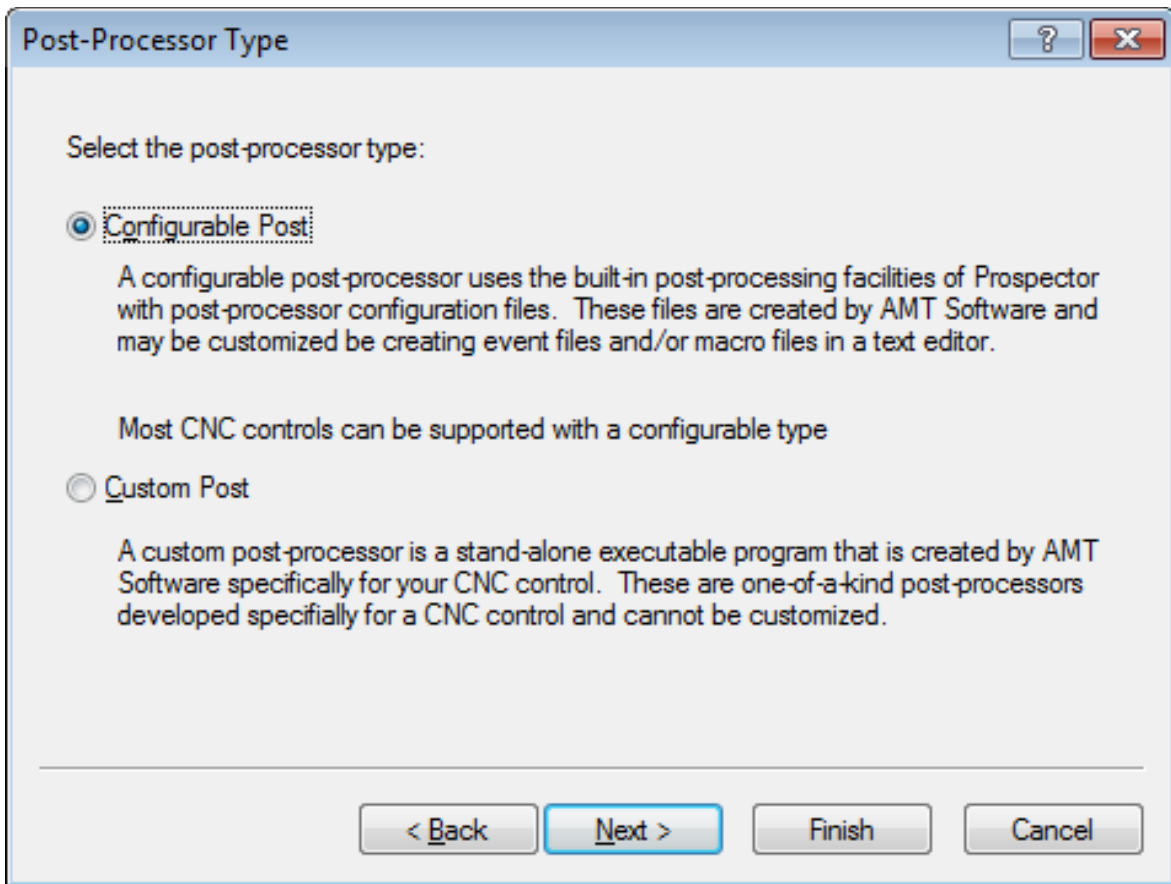
Click **Add** to start the post processor installation wizard.



Enter a name for the post processor. This name will be used when you choose the post in the Send to Control dialog.

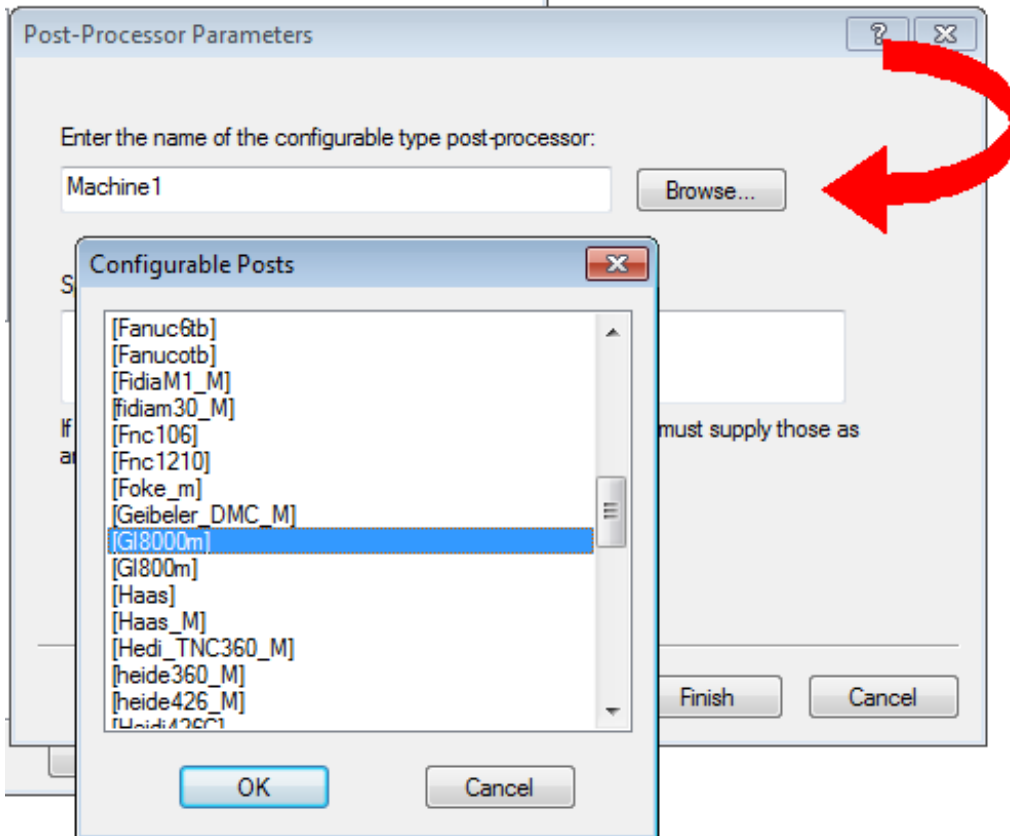


Use a descriptive name to describe the machine tool.

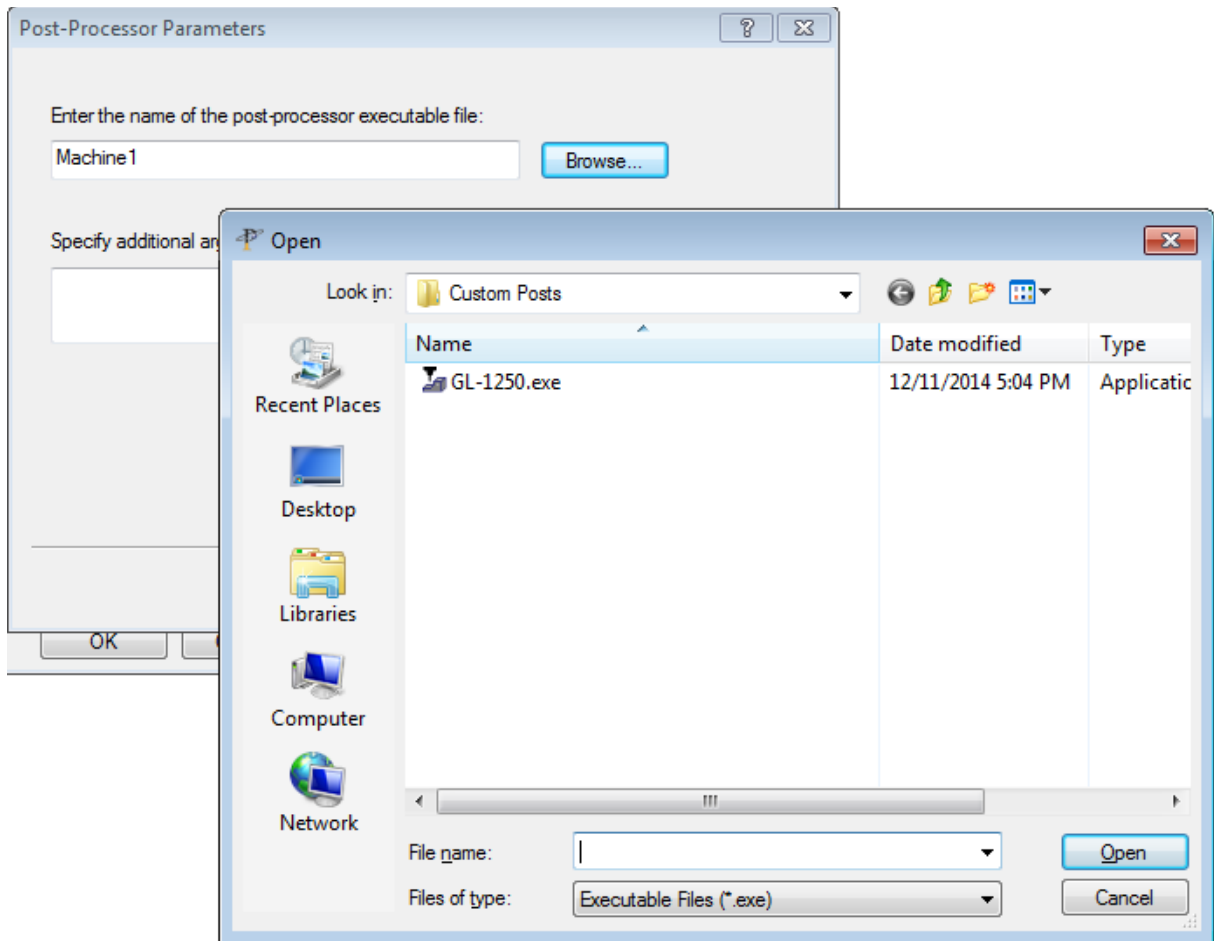


Choose the type of post processor.

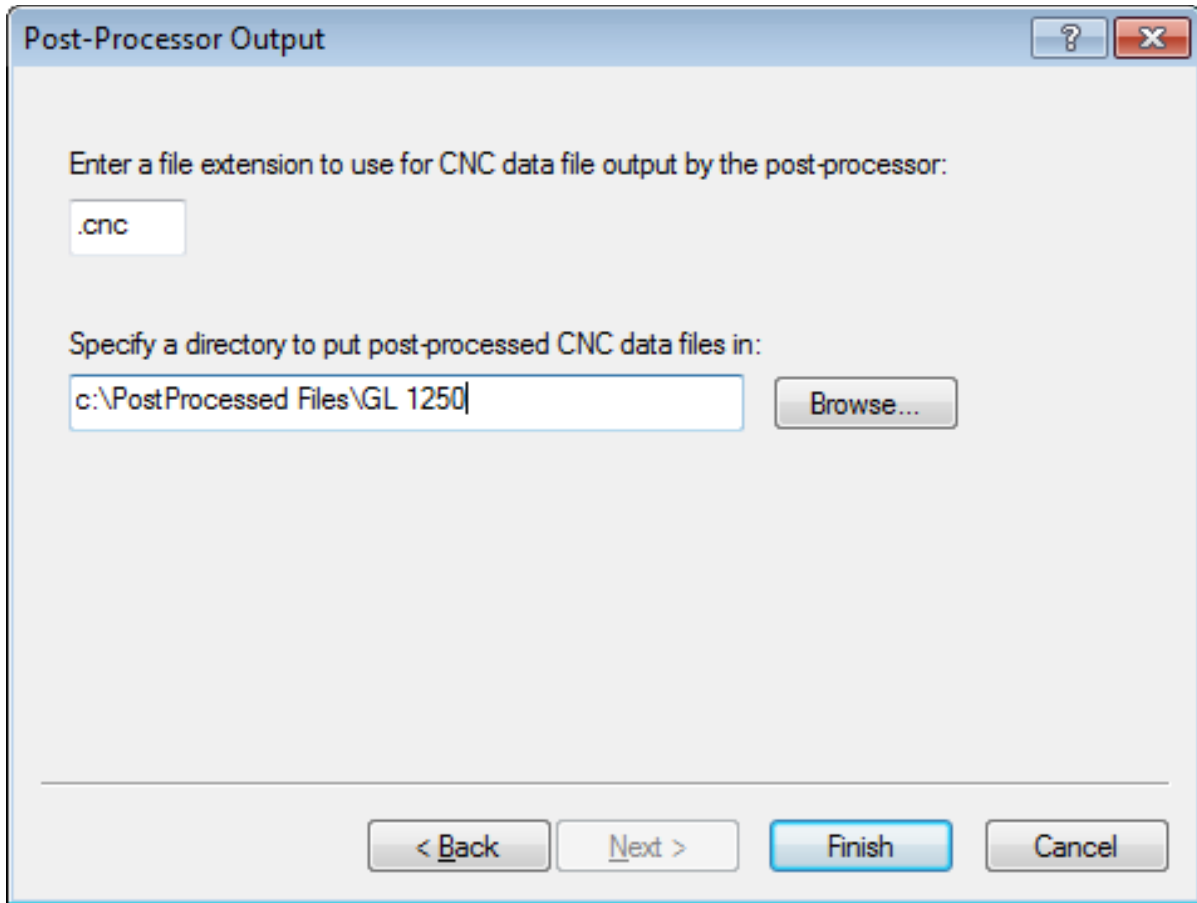
Either a configurable style post processor from the post library or a custom (.exe) post processor that was made specifically for you.



Click **Browse...** to choose the post processor. In the above example, a *Configurable Post* was the type chosen therefore we are presented with a dialog containing the choices for all post processors of that type.



If a *Custom Post* processor was indicated, click **Browse...** to choose the custom post processor. This is an executable program (.exe) that is in the Custom Posts folder.



Finally specify the extension to apply to the post processed output file and choose a folder to where the files should be published.

Click Finish and you're all set.