

Locking Rules

Objectives

Learn why and how to lock Rules in Insight.

Overview

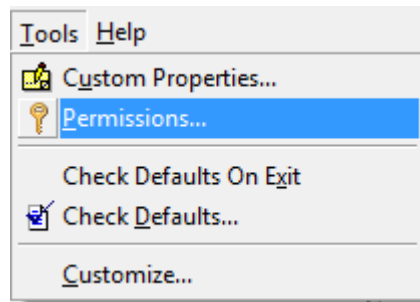
Locking Rules in Insight
User Database
Prospector

Locking Rules

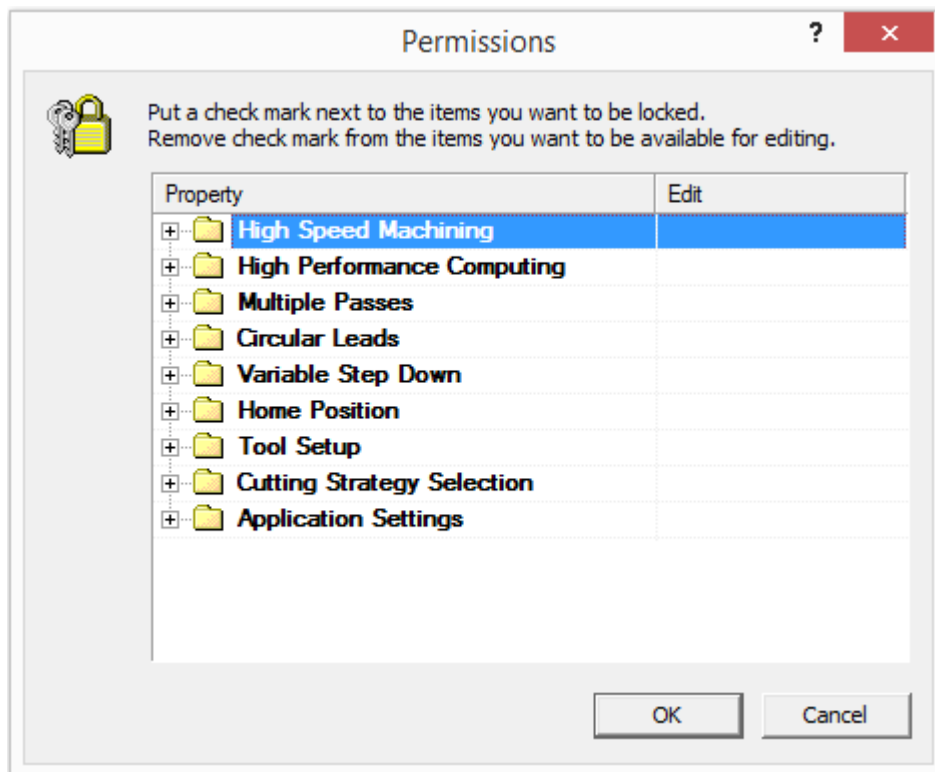
You can lock Rules in the System database to prevent users from overriding them in either the User database or Prospector. Use this functionality to lock in your shop practices. Rules are locked in Insight by using the Tools/Permissions... menu item. This will bring up the Permissions dialog. Here you can lock any Rule in the database. This will lock the Rule for any Material/Configuration and Category. This will lock the Rule for any user whose User database inherits from the System database. Let's take a look at an example - I want to make sure all my users are Spiral Clearing for Z-Planar With Clear.

Example

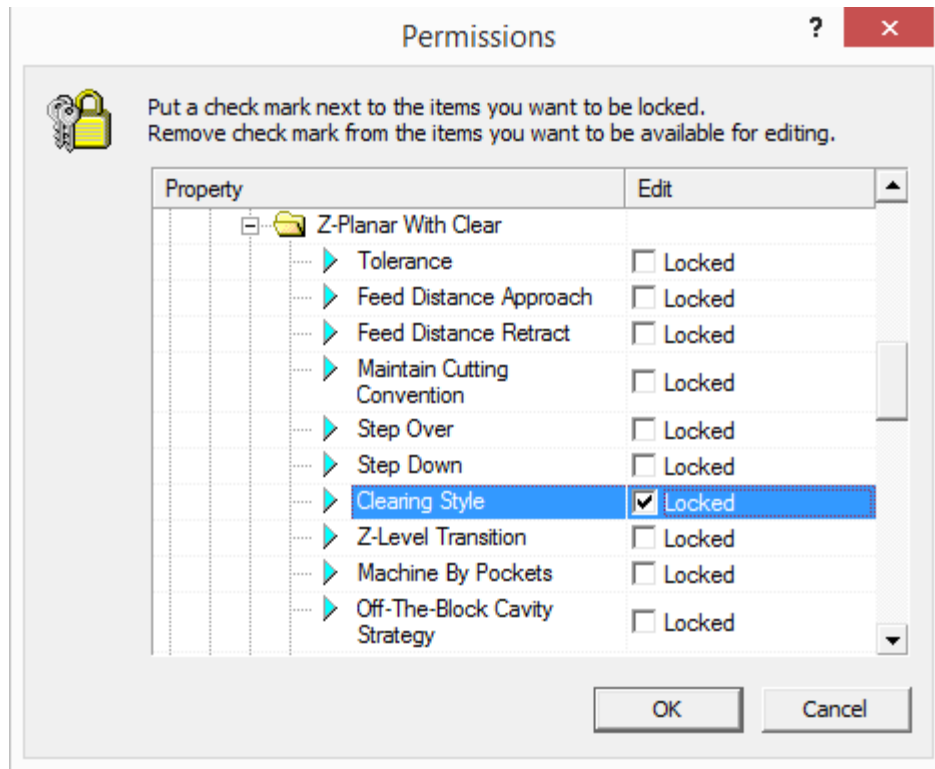
In Insight, load the System Database. Rules have to be locked in the System database. Spiral Clearing is the default, so I don't have to change the Rule. If I wanted to always Zigzag Clear, I'd have to go to each Material/Configuration and Category and set the Rule for Clearing Style. But for this example, I only have to lock the Rule. Select the Tools/Permissions... menu item:



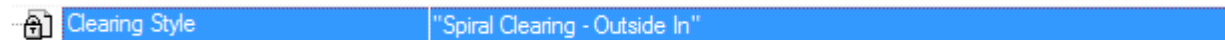
It presents a tree similar to the Configuration tree



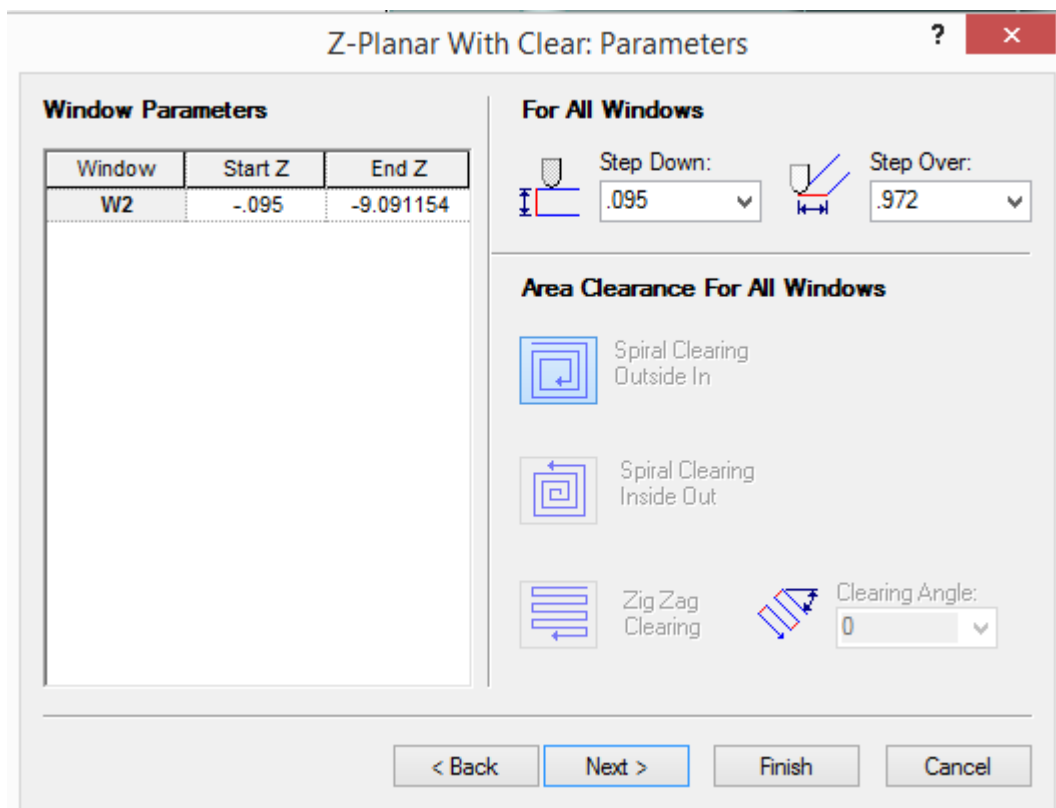
Go to Cutting Strategy Selection/3D Strategies/Z-Planar With Clear. Check the box next to Clearing Style:



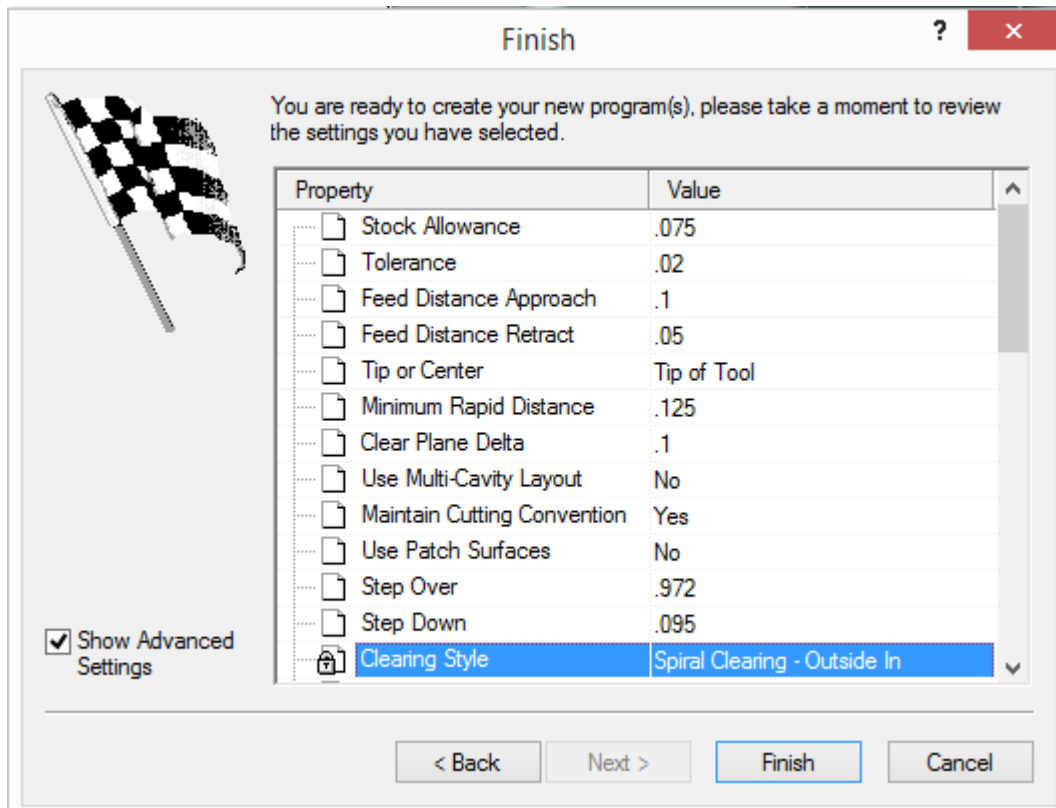
Click the OK button. The Rule is now locked. Before we go to Prospector, let's take a look at the User database. Save the System Database and open the User Database. In the Configuration tree, go to Cutting Strategy Selection/P20/Plastic Injection Mold/Basic Machining/Rough/3D Strategies/Z-Planar With Clear. You'll notice the little lock icon next to the "Clearing Style" Property. Also, you can't click in the Value cell to change it:



Now let's check Prospector. Open the sample Project and in the Rough Category, new 3D Program. Window Around Part, Z-Planar With Clear, and Next your way to the Parameters page. You'll notice that all the controls associated with the Clearing Style Property are disabled:



On the last page, you'll notice a little lock icon next to the Clearing Style Property name:



Note that this only disables controls and locks the Property for Clearing Style. If I wanted to force users to Zigzag Clear and always use a Cut Angle of 0 degrees, I'd have to set the Properties in the System database and lock both Clearing Style and Zig Zag Cut Angle Properties.