

Creating a New User Database

Objectives

Learn how to create a new User Database

Overview

Why have different User Databases?

Create a new User Database

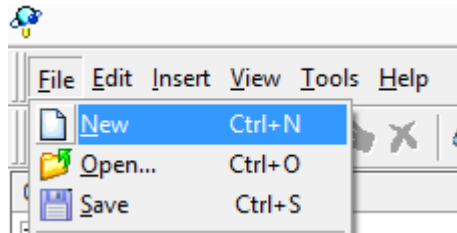
Use that Database in Prospector

User Database

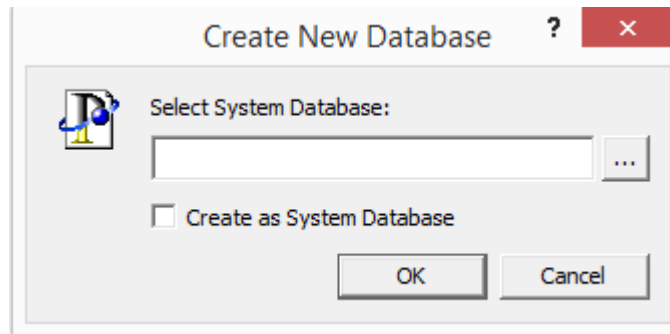
Different users have different preferences. Different users have different purposes. One user might only do roughing and semi roughing of P20. Another user might only be making electrodes. They can share a System database, but can use separate User databases. The databases can have different Rules and different Tools. New User Databases are created in Insight. Use File/New.. to create a new database, either User or System. In this case, we'll be creating a new User database.

Example - Let's create a new User database

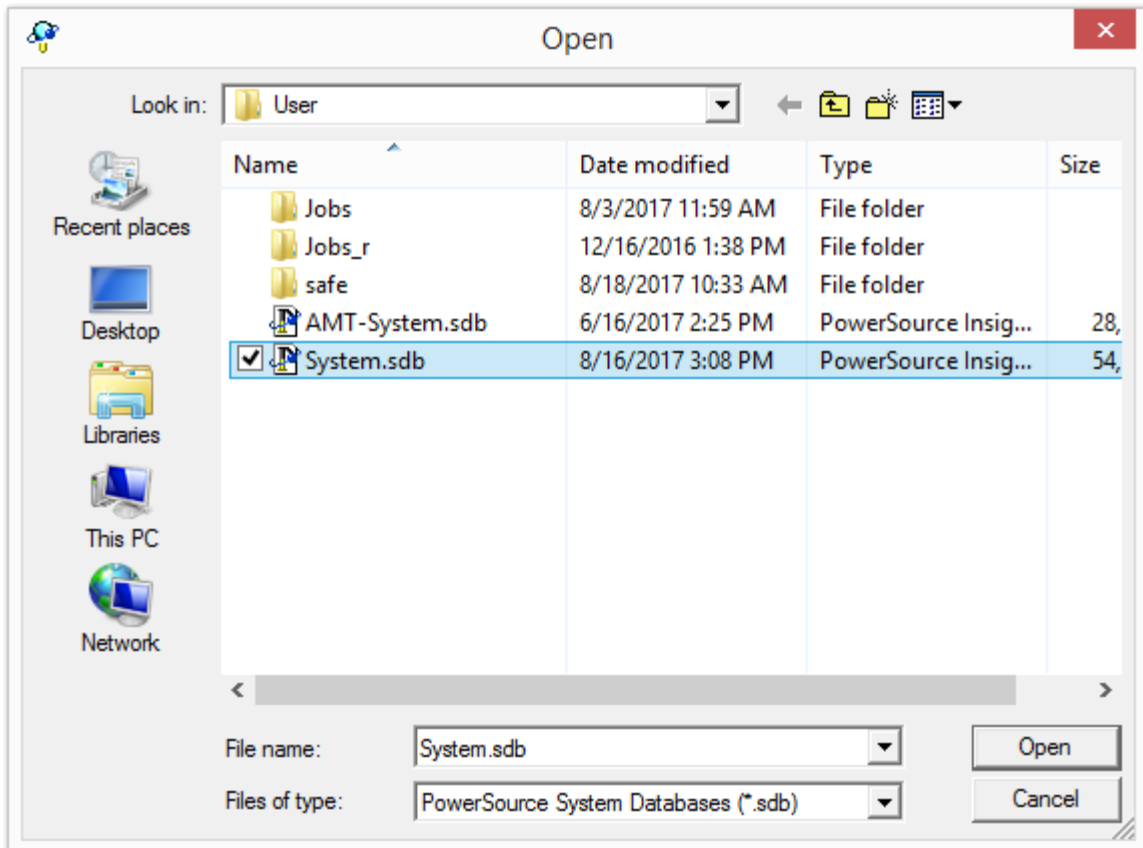
In Insight, in the File menu, pick New:



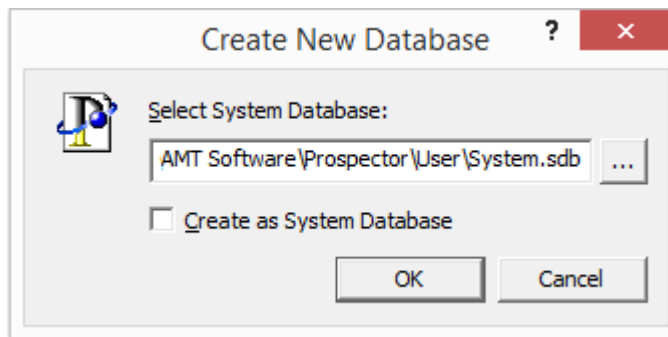
We're presented with a dialog to specify the System database:



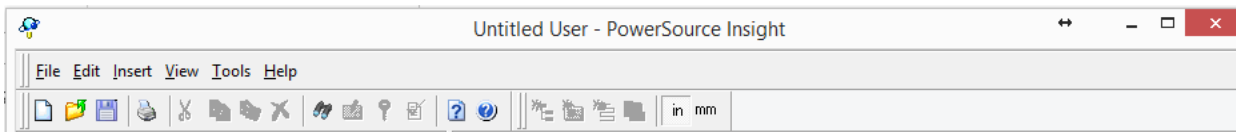
Use the ... button to browse to the System database:



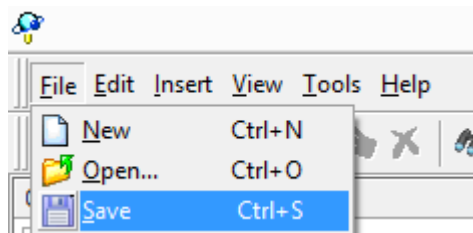
For example, we could have a System database that everyone uses on a server somewhere, but for this example, we'll use the local System Database:



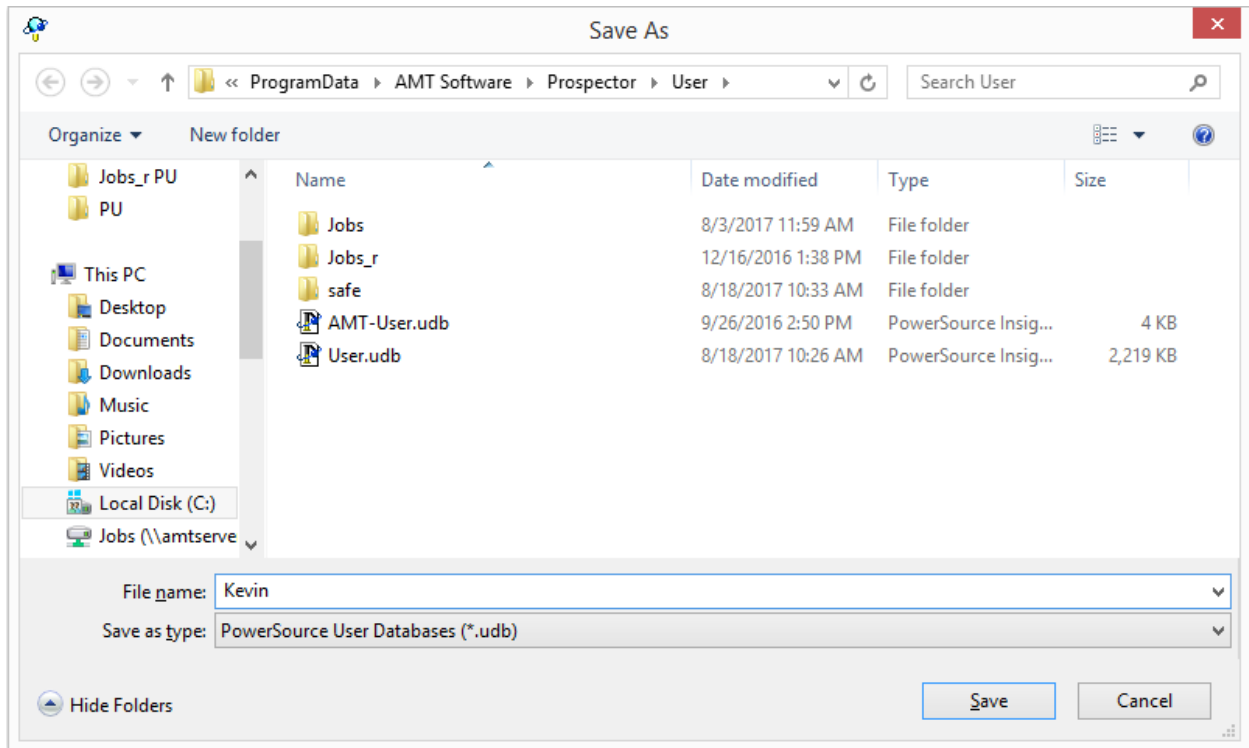
Leave the check box unchecked. Click OK. We now have a brand new "blank" untitled User database:



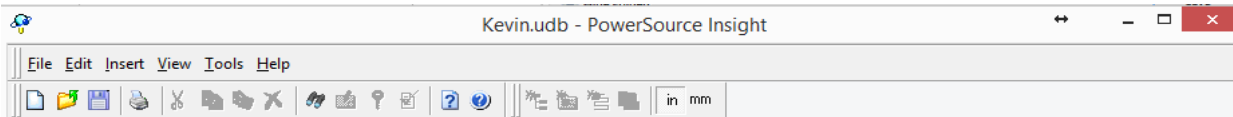
File/Save to save the database:



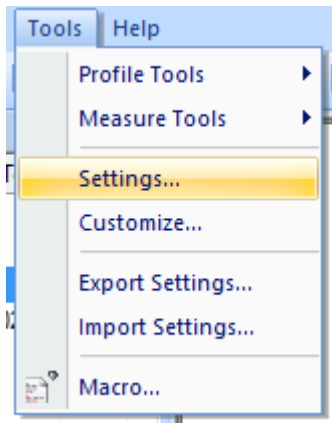
We're prompted for a file name. Save it in the same directory as the User database:



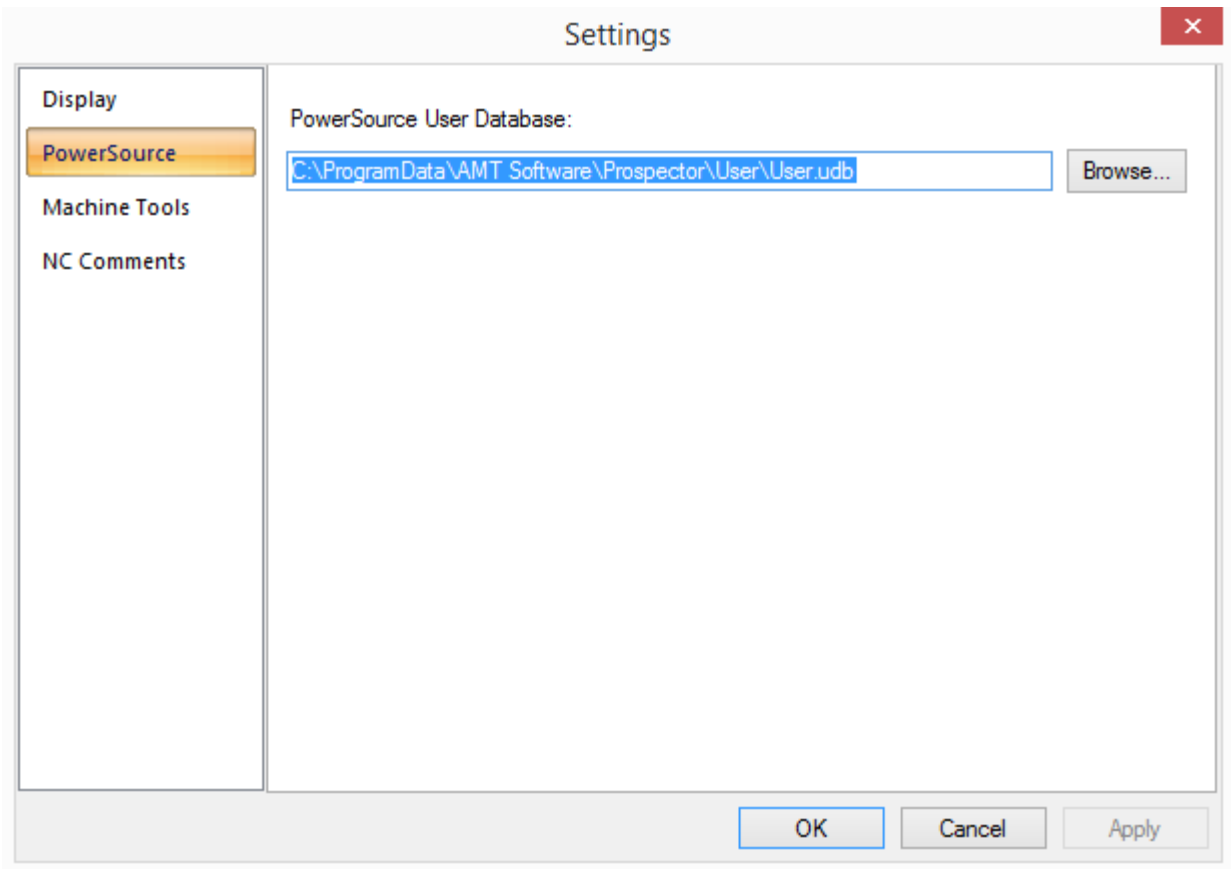
Use your name or login as the name:



Now let's use this database in Prospector. In Prospector, in the Tools menu, select Settings:



On the left, select PowerSource:



Use the Browse... button to select our new User database. Click OK. And that's it. We're now using the new User Database.