

Project-Based Interface Explainer

A project represents an individual part that needs to be machined.

In mold making, there are many individual components that need to be machined in order to build the mold.

For a particular mold - a Job in Prospector - individual components are organized underneath that job name or number. Each of these is a project:

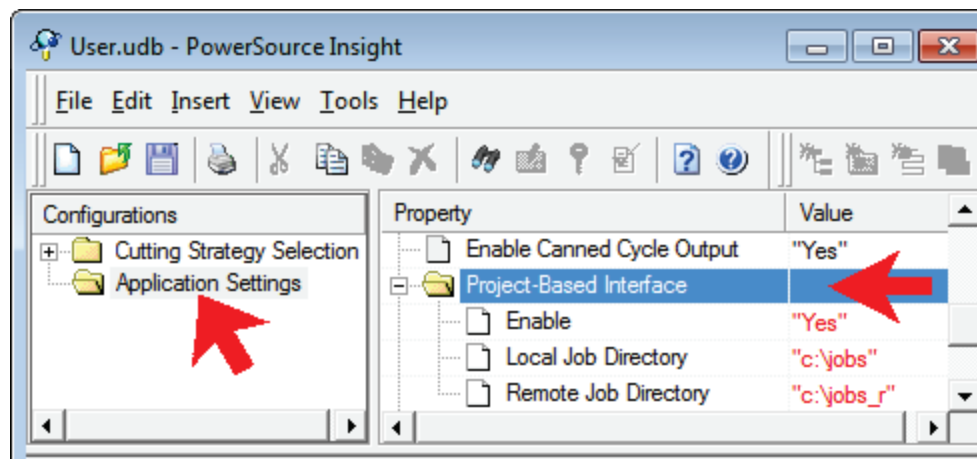


Job 4958 - A-Pillar

- Top Clamping Plate
- X-1 Plate
- Core
- Cavity
- A Plate
- B Plate
- Ejector Retainer Plate

.....

How to Setup for the Project-Based User Interface



Start PowerSource Insight from the Prospector program group in the Windows start menu.

Click on Application Settings in the navigation pane on the left side.

Open the folder 'Project-Based Interface' by clicking on the '+'.

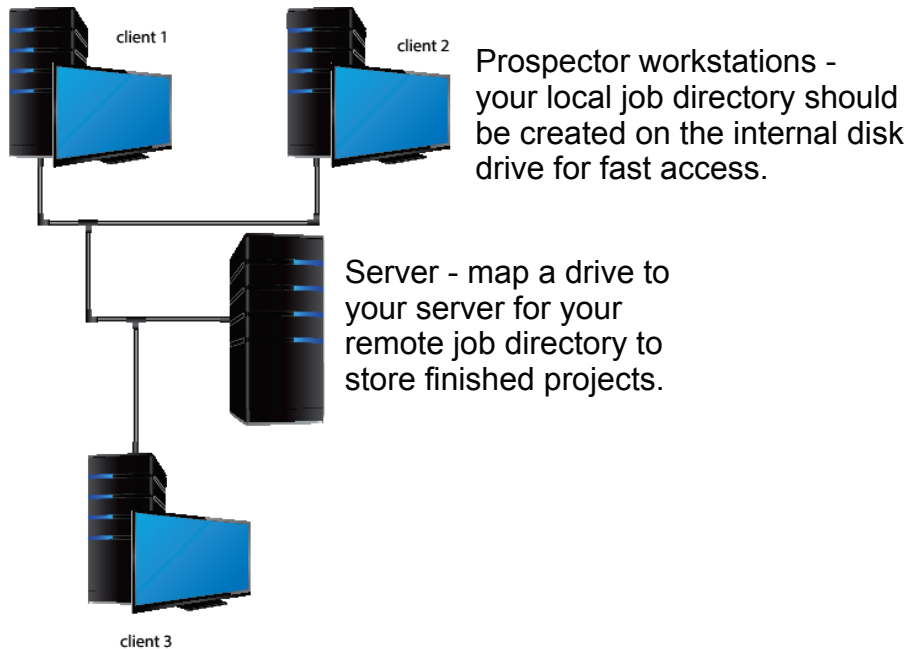
Set 'Enable' to "Yes" then choose your local and remote directories for your jobs.

Make the setting the same for both inch and metric.

Save the database.

Project-Based Interface Explainer

Remote and Local Job Folders



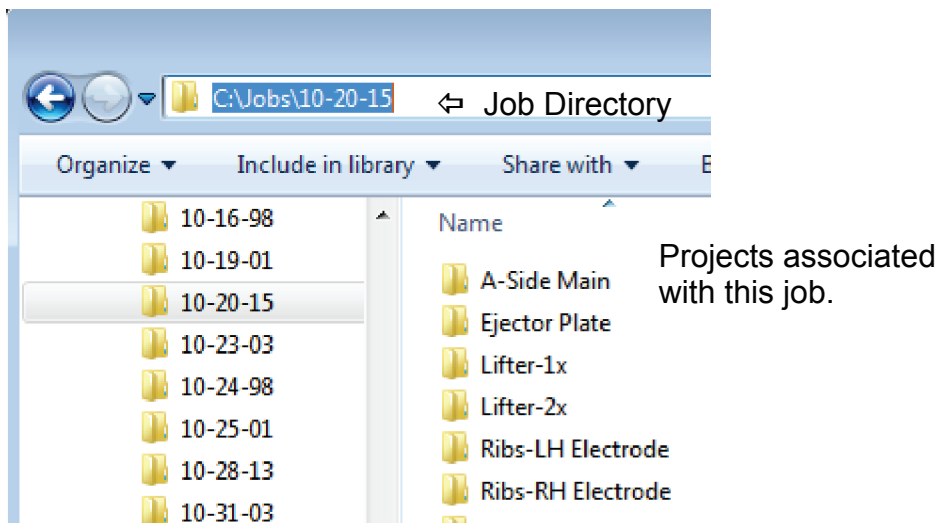
The Remote Job Directory is where projects should go when we have completed programming and machining.

File / Archive Project will collect all the data for a local project, compress the data and store it in the remote job directory under the job number/name and project name as a *.prz file. The local project directory is removed.

The remote job directory is infrequently accessed so it can be a mapped drive to a server with lots of disk space or even in the cloud. It's OK to have both the local and remote job directory on the internal drive.

The local job directory is frequently written so should to be created on the internal hard drive for optimal performance.

Advantages of a Project-Based Setup



It's simple and easy to understand!

Projects that are in your local job directory are locked. No other user can access the project until you decide to archive the project.

Remote job directory can be on a mapped drive or cloud drive. Archiving a project removes it from your local drive saving disk space.

All job & project data is always organized into the local and remote directories according to your shop standards. You don't need to remember to copy files or where to put them when you need to access them or archive them.