

PROSPECTOR™

The Gold Standard In Toolmaking

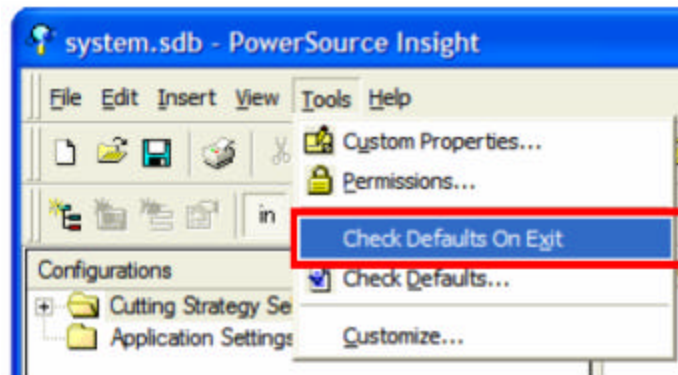
Takes too Long to Exit Insight

When you exit Insight after making changes in the system database, Insight automatically checks to make sure all rules have a default value. This is done to maintain proper integrity of the database when Prospector reads it. This check is usually necessary when are creating a new system database from scratch, so that you don't miss assigning values for properties. However, in most practical cases when making simple changes to the system database this check might not be needed and therefore might save you time if you could disable it. Here's how:

Step 1: Click *Start->All Programs->Prospector->Insight*.

Step 2: Load the system database **system.sdb**.

Step 3: Click **Tools->Check Defaults on Exit** making sure it becomes unchecked.



Click **Check Defaults on Exit** to uncheck it.

Step 4: Exit Insight.

If necessary in the future, you can have Insight check the rules by selecting the entry **Check Defaults...** from the **Tools** pull-down menu.