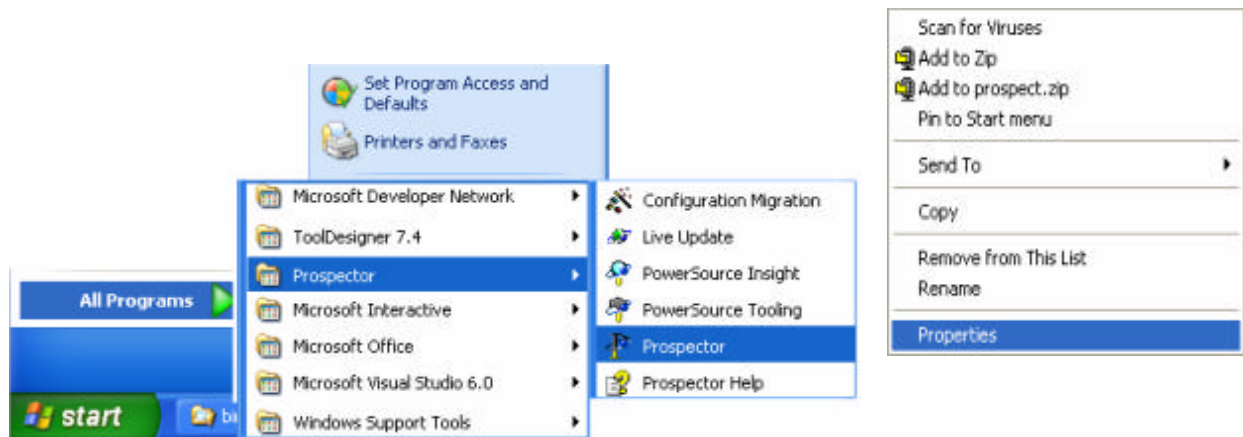


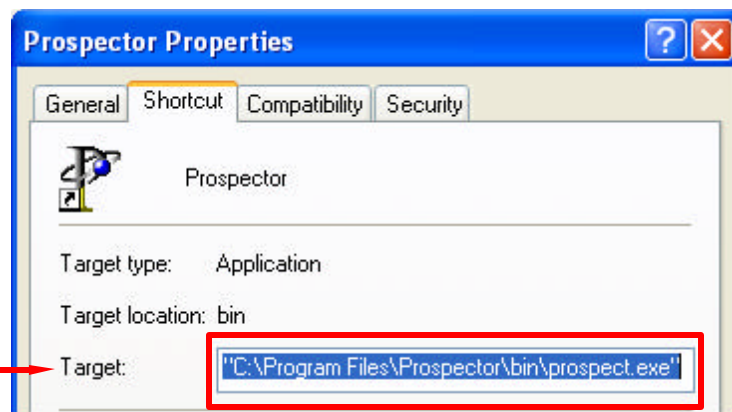
Moving Prospector to a New System

Find Out Where Prospector is Installed on The Old System

Step 1: Choose *Start->All Programs->Prospector*. Scroll down the pull right menu to the entry *Prospector* and press the right mouse button. From the posted menu select the entry *Properties*.

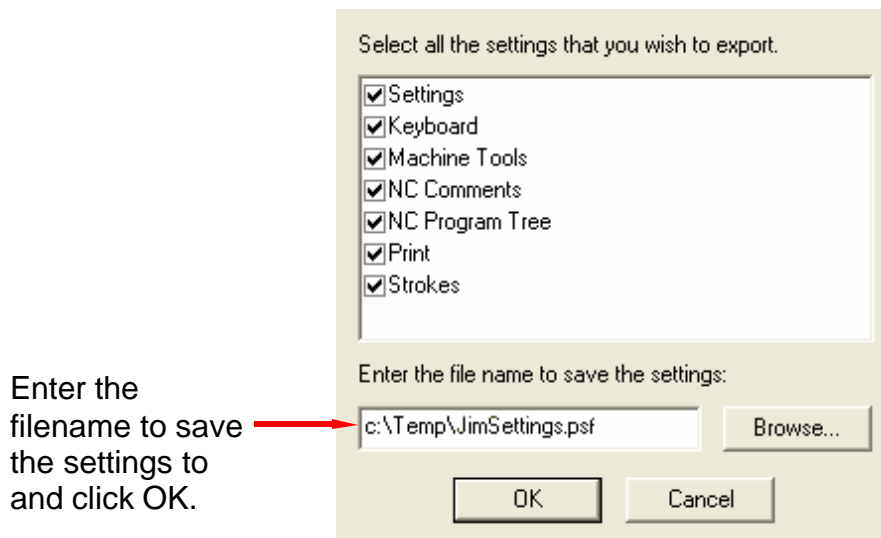
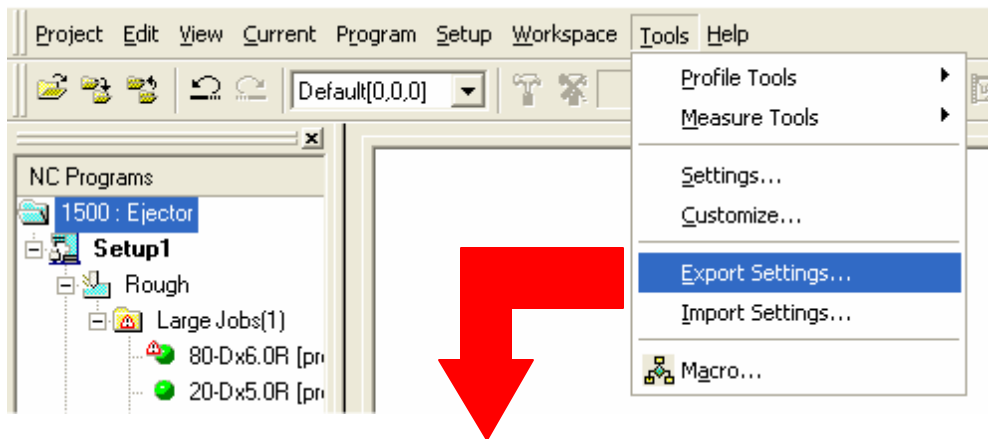


Location of where Prospector is installed on the system.



Backup Current Configurations on The Old System

For each user that logs into the system, login is as that user and *Export* the settings. Remember to use a different filename for each user. To do this start Prospector and click on **Tools->Export Settings...** When finished, exit Prospector.

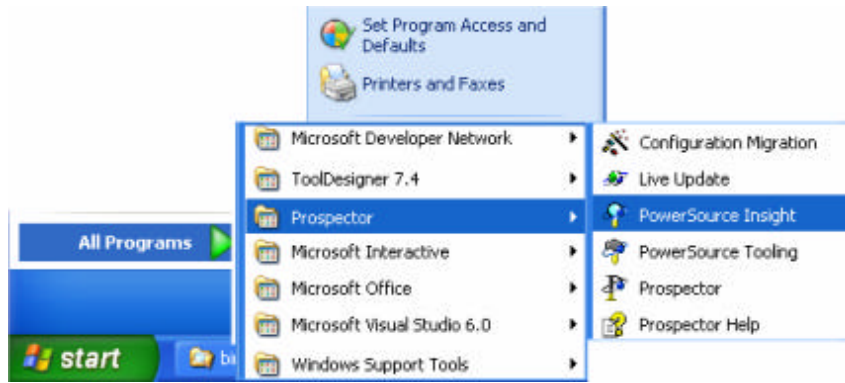


Enter the filename to save the settings to and click OK.

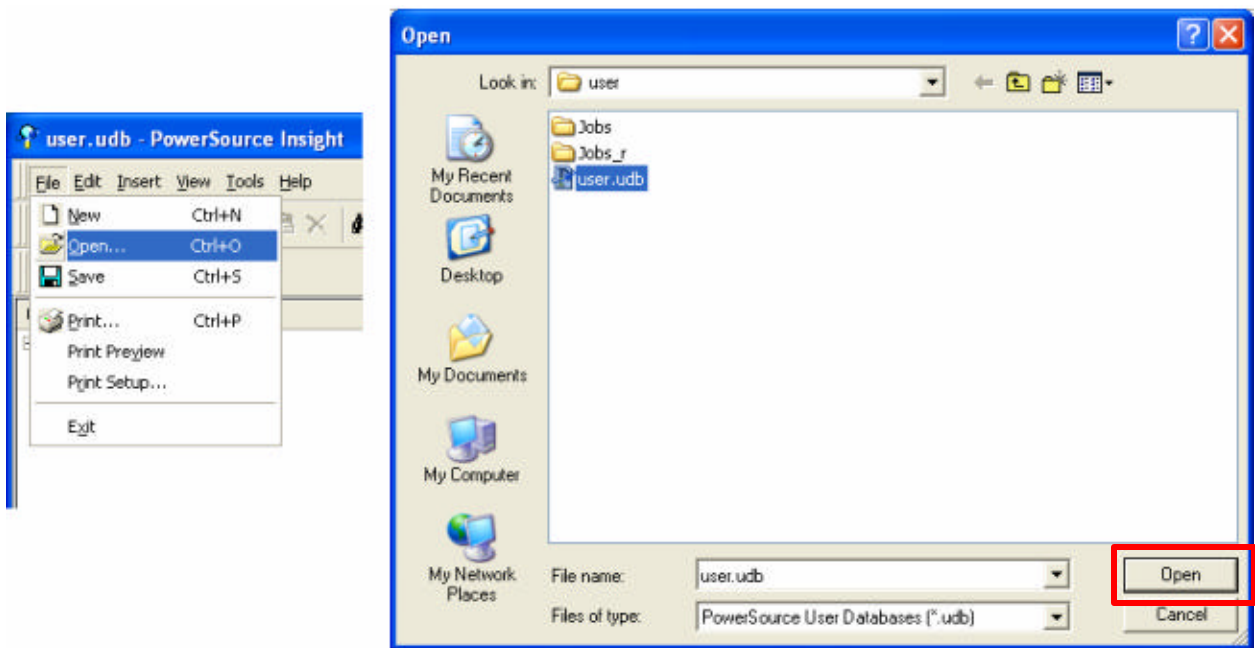
Locating Prospector's Application Files

There are 3 folders that we need to find the location of on the old system. They are *cache*, *jobs* and *jobs_r*. What you need to find out is if these folders are local to the system or on mapped drives. If the folders are local to the old system then you will need to copy the folder from the old system to the new system (which will be covered later in this document). If the folder(s) is on a mapped drive, make sure that the drive is mapped on the new system. To find their location do the following:

Step 1: Start the application PowerSource Insight. Choose *Start->All Programs->Prospector->PowerSource Insight*.



Step 2: In PowerSource Insight choose the entry *Open* from File pull-down menu and then select the file **user.udb** and click Open.

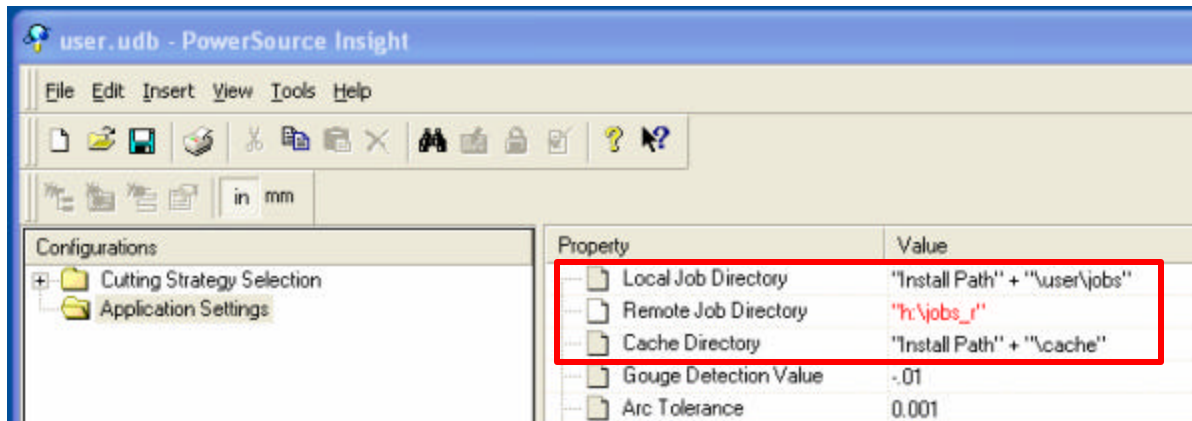


Step 3: Click on the entry *Application Settings* under Configurations.



Step 4: Check the *Value* (path) for the entries *Local Job Directory*, *Remote Job Directory* and *Cache Directory*. The default values for these folders should be as follows:

- Local Job Directory "Install Path"+"\user\jobs"
- Remote Job Directory "Install Path"+"\user\jobs_r"
- Cache Directory "Install Path"+"\cache"



If the value for any of these entries is not the default, make sure that the folder exists on your new system. This may involve mapping a drive or creating a folder on a partition. In our example the *Remote Job Directory* is located on the "h" partition and the name of the folder is *jobs_r*.

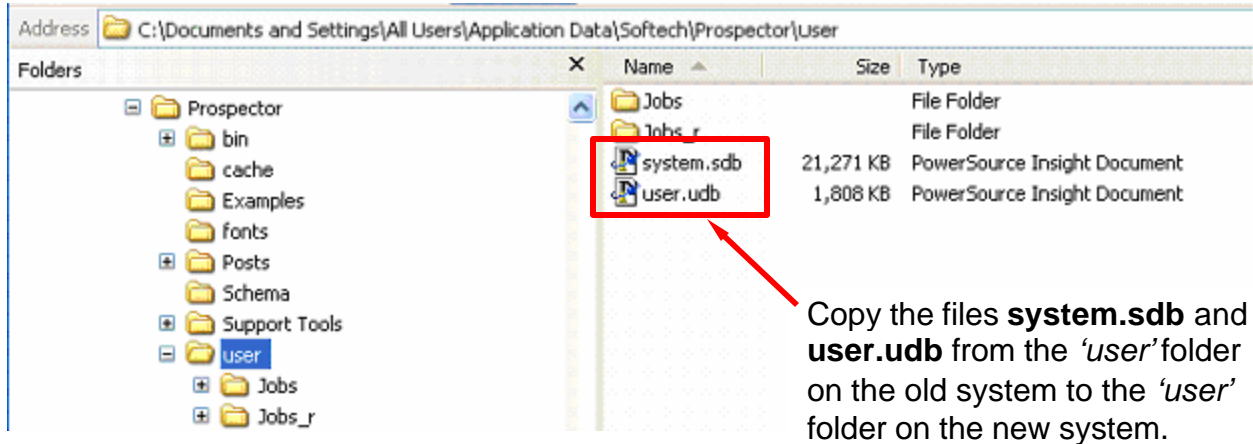
Preparing Your New System

- Step 1:** Make sure that the new system is on the network. You want to be able to *map* the drive(s) on the old system where Prospector is installed and where you exported the settings for each user.
- Step 2:** Check that all non-default Prospector Application File folders exist (*jobs*, *jobs_r* and *cache*). See *Locating Prospector's Application Files*.
- Step 3:** Add logins for all the users that were on the old system.
- Step 4:** Move the *dongle* or *USB key* from the old system to the new one.
- Step 5:** Login as the Administrator and install Prospector in the **same** location as it was on the old system.

Copy The Databases Files

Still logged in as the Administrator on the new system you want to copy Prospector's database files **system.sdb** and **user.udb** from the old system. To do this open *Windows Explorer* and browse to the 'user' folder where Prospector is installed on the old system. The default location is:

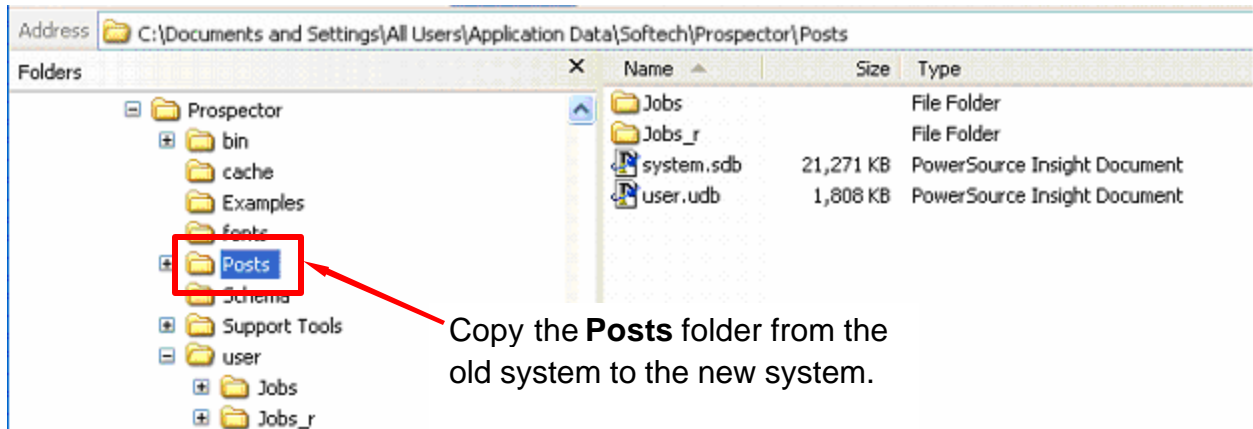
C:\Documents and Settings\All Users\Application Data\Softech\Prospector\user



Copy Library Post Processors

Using *Windows Explorer* again copy the entire 'Posts' folder from the old system. The default location is:

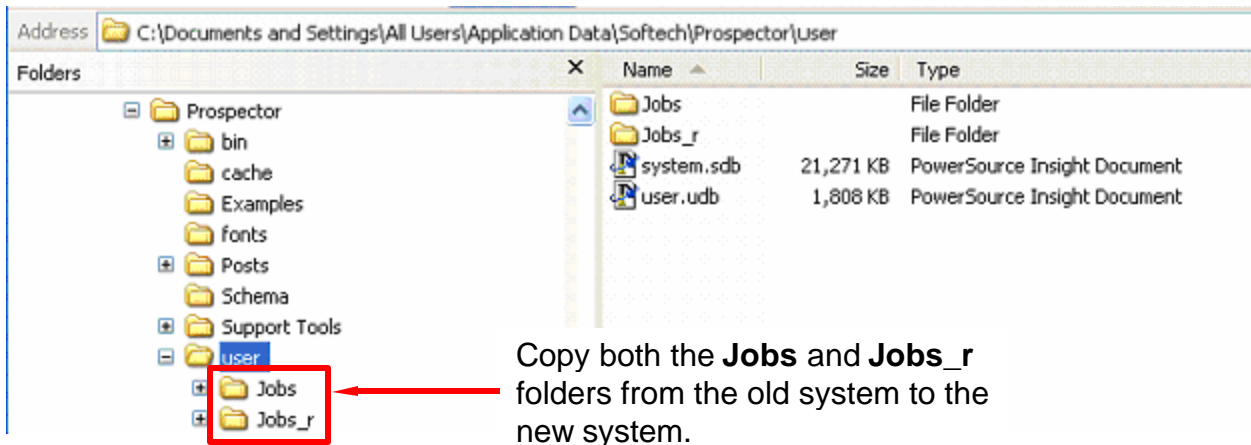
C:\Documents and Settings\All Users\Application Data\Softech\Prospector\Posts



Copy The Projects Folder

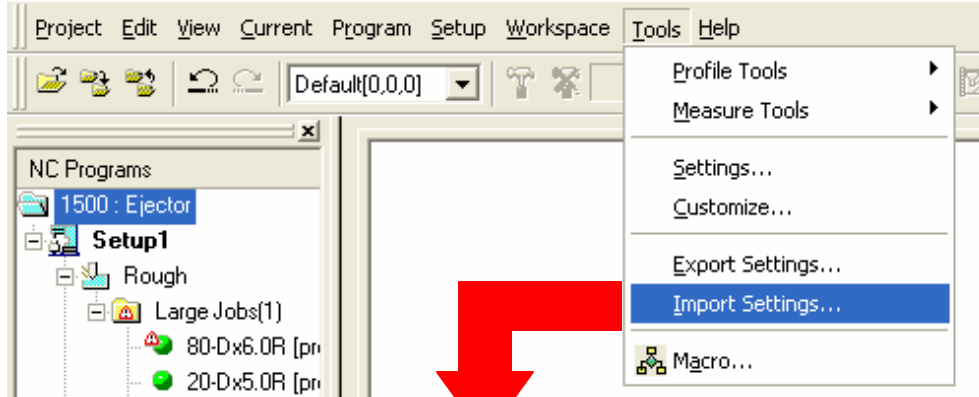
Using *Windows Explorer* copy the entire 'Jobs' and 'Jobs_r' folders from the old system. The default location is:

C:\Documents and Settings\All Users\Application Data\Softech\Prospector\user

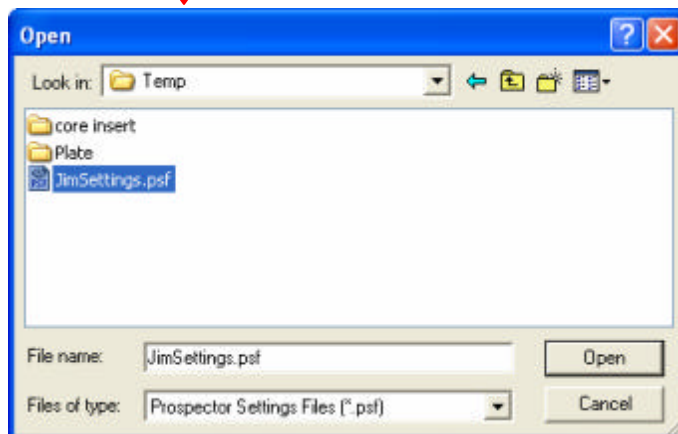


Restoring User Configurations on The New System

For each user that logs into the system, login is as that user and *Import* the settings you exported on the old system. Remember that each users settings was saved to a unique filename. To do this start Prospector and click on **Tools->Import Settings...**



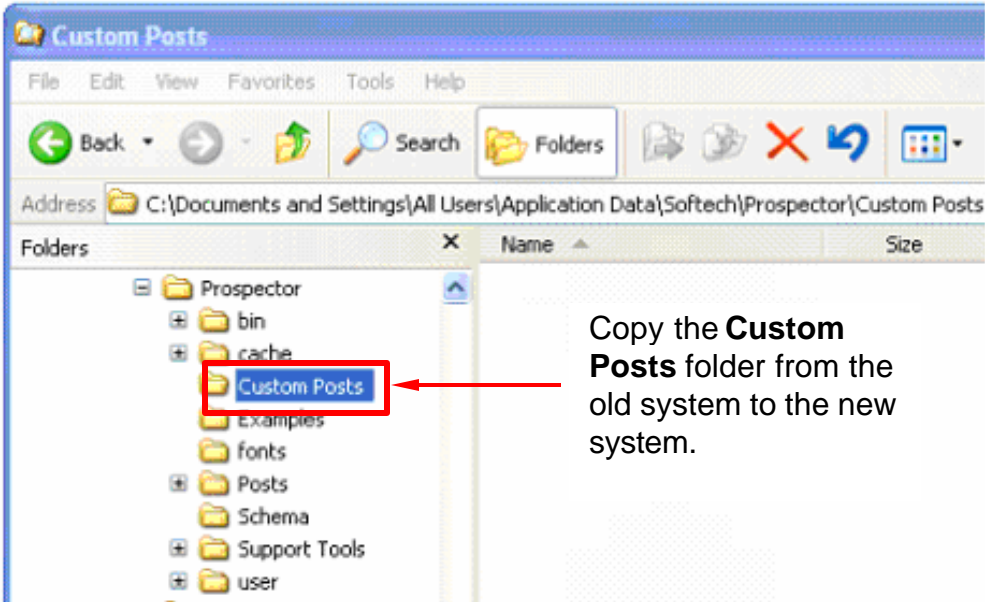
Browse to where the settings were saved for each user, click on the filename then click Open. Remember to do this for each user.



Copy Custom Post Processors

Using *Windows Explorer* copy the entire 'Custom Posts' folder from the old system. The default location is:

```
C:\Documents and Settings\All Users\Application Data\Softech\Prospector\Custom Posts
```



Copy the **Custom Posts** folder from the old system to the new system.