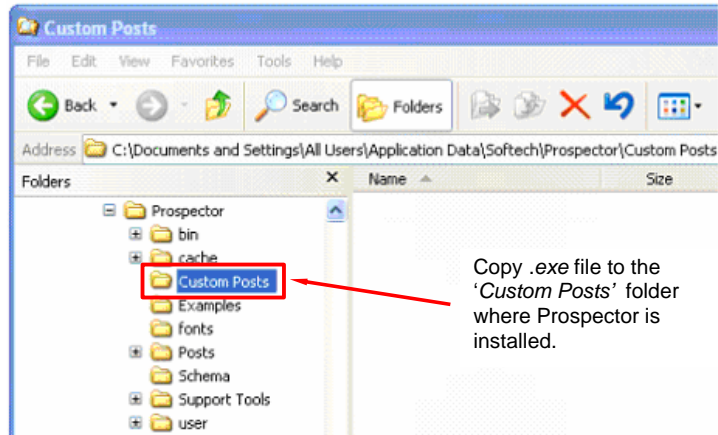


Post Processor Installation and Configuration

Installing a Custom Post Processor

A custom post processor is a program that is specially written for your CNC control. These posts have the file extension `.exe`. Custom post processors are installed by copying the `.exe` file to the 'Custom Posts' folder where Prospector is installed. Copy the `.exe` file to:

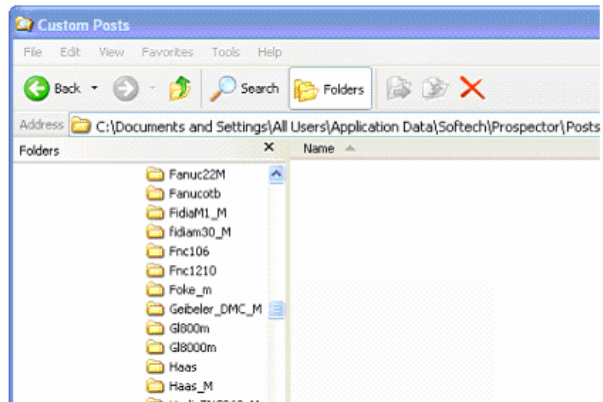
`C:\Documents and Settings\All Users\Application Data\Softech\Prospector\Custom Posts.`



Note: If the Custom Posts folder is not present simply create one.

Library Post Processor

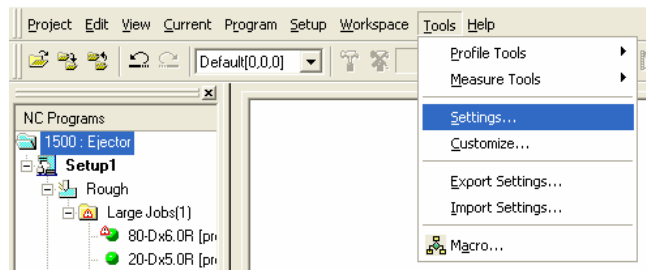
A Library post processor uses the built in post processing facilities of Prospector in conjunction with post processor configurations files. A library of post processors is provided with Prospector. Post processing configuration files are installed in individual folders corresponding to the post name.



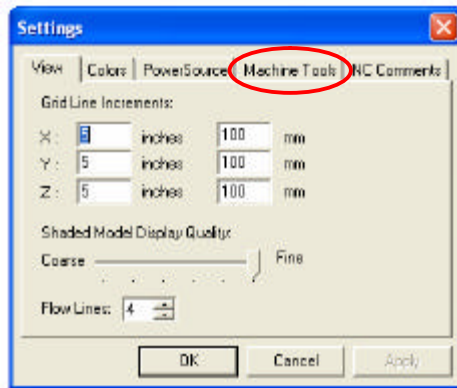
Configuring Prospector For Post Processing

Before you can send the N/C tape file to your controller you must define in Prospector the machine tools to be supported. For each machine tool you wish to send data to do the following:

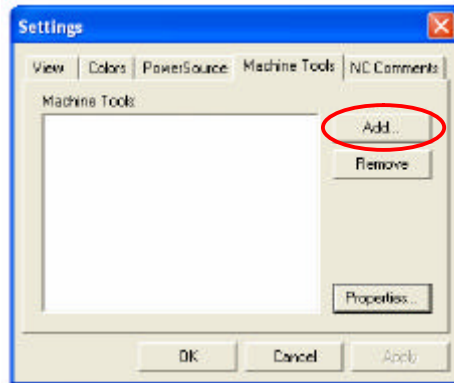
Step 1: Start Prospector and click on **Tools->Settings...**



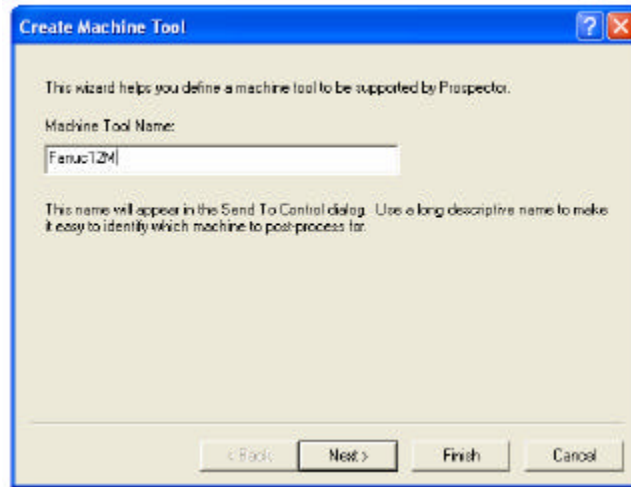
Step 2: Choose the tabbed entry **Machine Tools**.



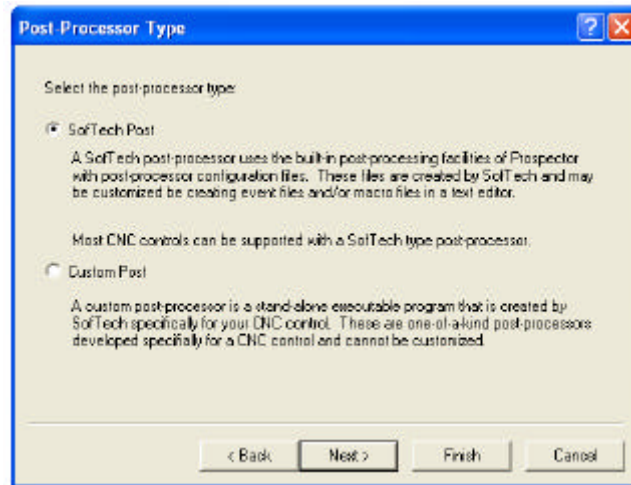
Step 3: Click **Add** to start the post processor installation wizard.



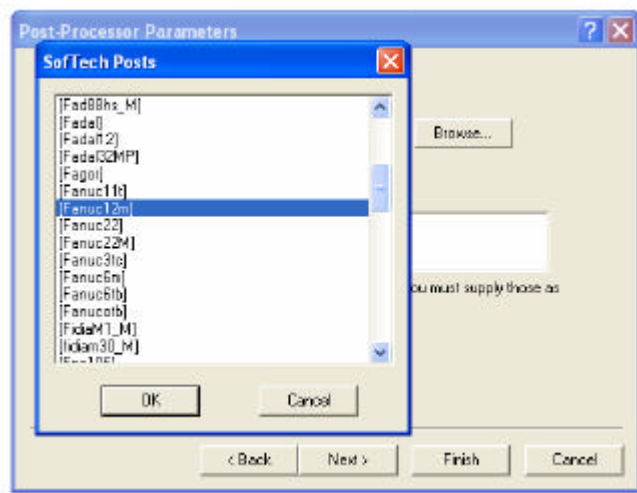
Step 4: Enter a name for the post processor. This name will be used when you choose the post in the Send to Control dialog. Use a descriptive name to describe the machine tool. When done click *Next*.



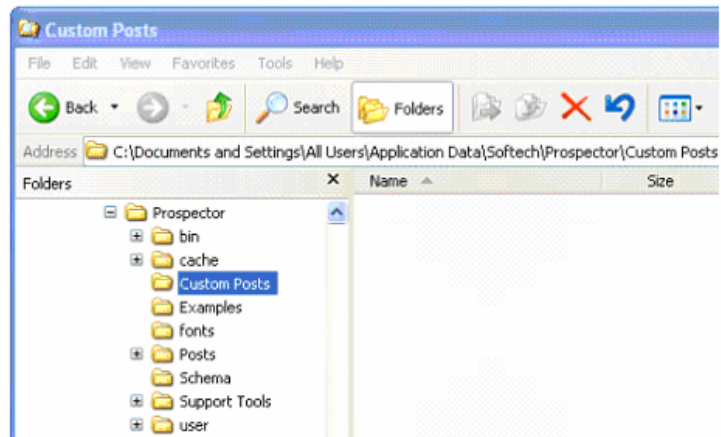
Step 5: Choose the type of post processor. Either a Library style post processor from the post library or a custom (.exe) post processor that was written specifically for your controller. When done click *Next*.



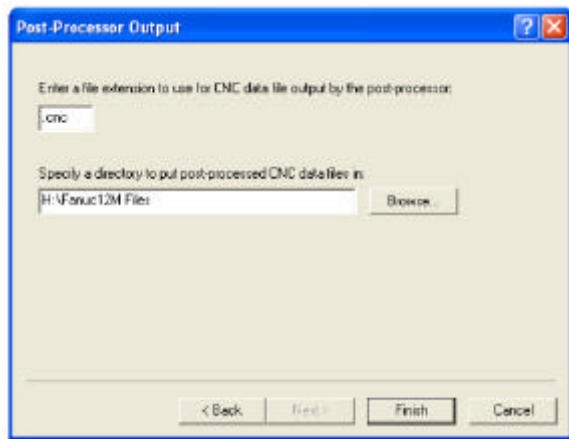
Step 6: Browse for the post processor you wish to install. If the post processor type is a Library post, the dialog will show you all posts available in the library. Selecting a post will automatically fill in the necessary parameters. When done click *Next*.



If the post type is a Custom Post then browse to the '*Custom Posts*' folder where Prospector is installed, select the name of the custom post and click *Open*.



Step 7: Choose a file extension for post processed files and a directory to save post processed files to. When done click *Finish*.



Note: If your CNC control is on the network, you can send files directly to the disk drive on the control.