

New Installation of Prospector

Installing The Security Device

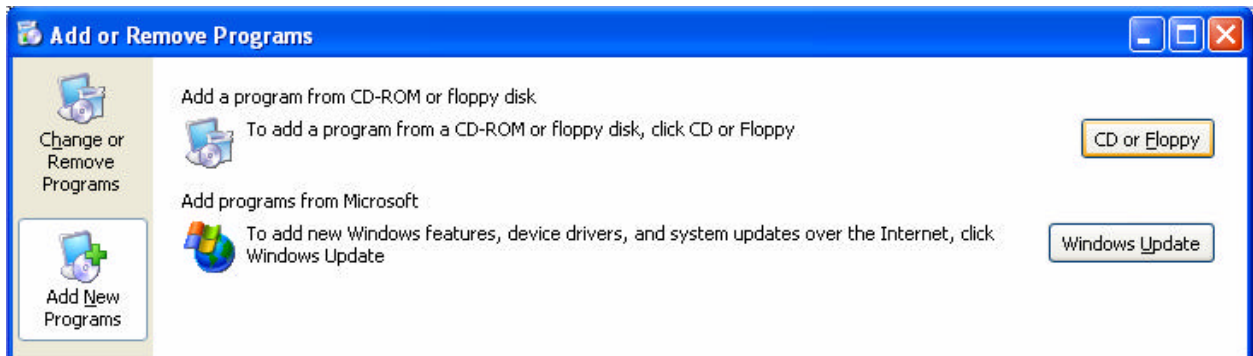
Prospector is a licensed and secured product and requires a USB key to run. This key is included in your Prospector startup package and all you need to do is simply plug the key into any open USB port on the system.

Plug this key into any open USB port.



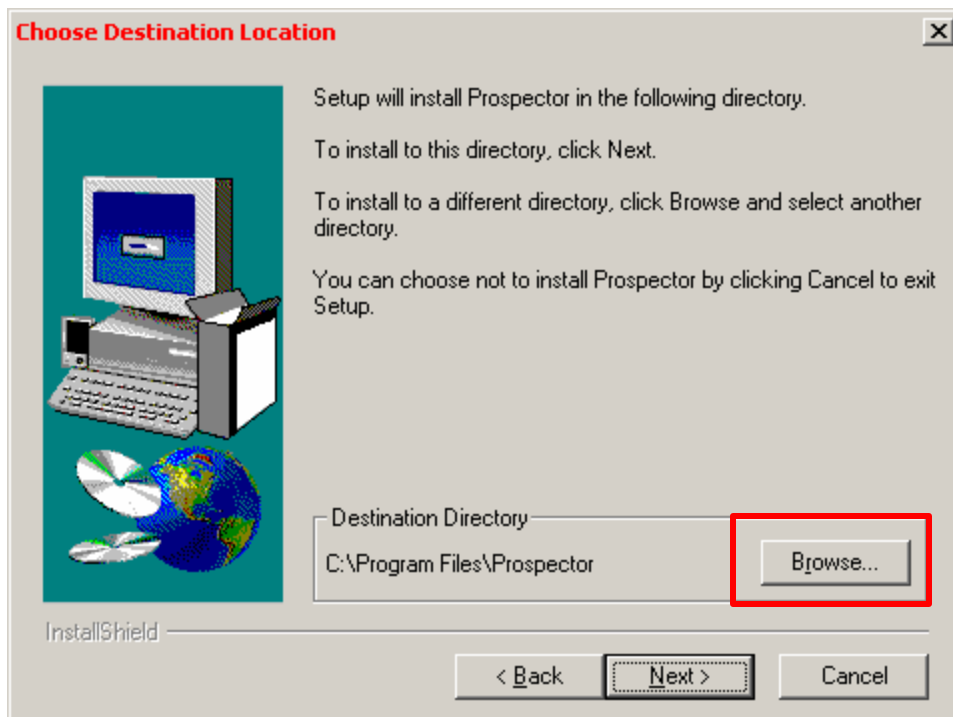
Installing The Software

Step 1: Login as the Administrator and insert the Prospector CD in your CD-ROM drive. The Setup program should automatically start. If it does not, choose *Start->Control Panel->Add or Remove Programs*. From the Add or Remove Programs dialog click on *Add New Programs* and then click *CD or Floppy*.



Click Next and then Finish on the Install Program wizard.

Step 2: The default location for the installation of Prospector is *C:\Program Files\Prospector*. If this location is acceptable you can click Next on each page of the wizard until finished. If you choose to install Prospector in a different location click the Browse button on the 3rd page of the wizard, browse to where Prospector is to be installed and click OK. Don't forget to remove the Prospector CD from your CD-ROM drive when the installation is complete.



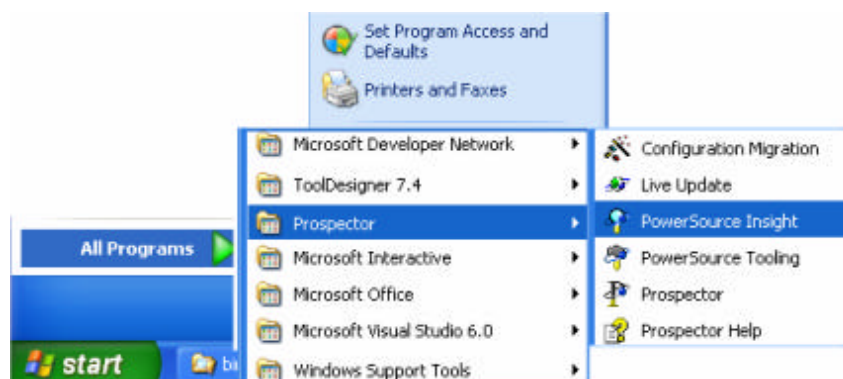
Location of The Remote Job Directory

The *Remote Job Directory* (jobs_r) is where your finished Prospector projects are stored. By default this folder is local to the system that Prospector is installed on. Default location is:

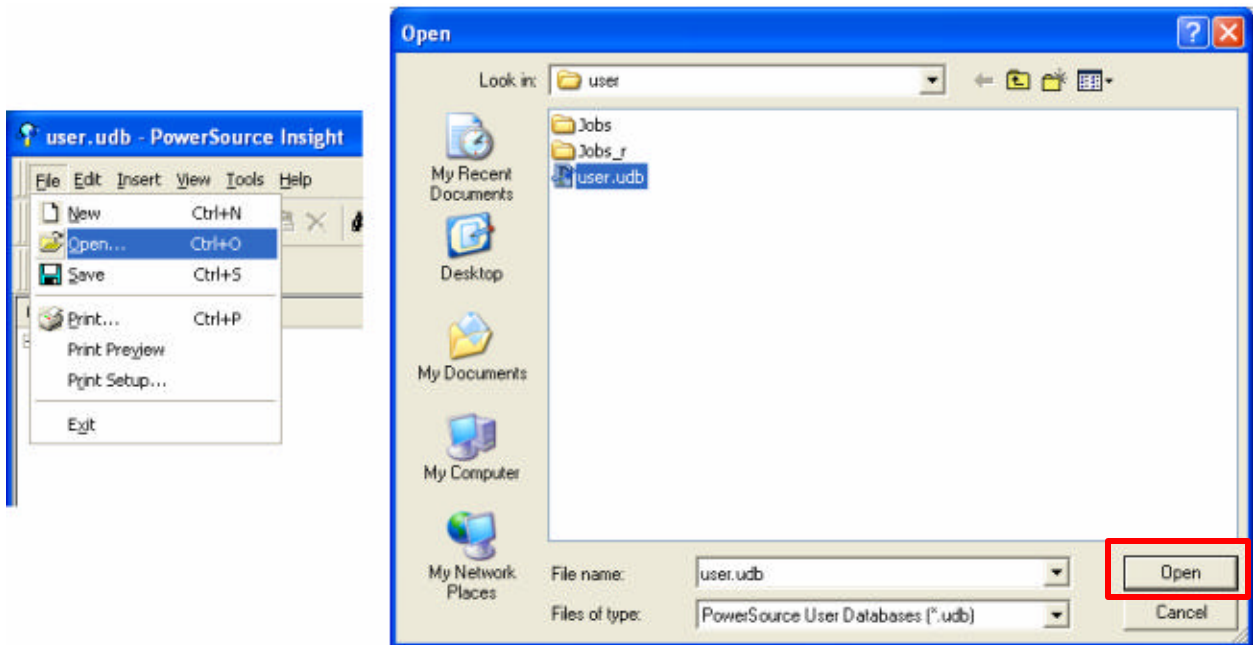
C:\Documents and Settings\All Users\Application Data\Softech\Prospector\user
It is a good idea to have this folder on a server system so your finished projects are backed up on a regular basis. To change the location of this folder do the following:

Step 1: Make sure that the drive is already mapped and that a folder named *jobs_r* already exists on that partition.

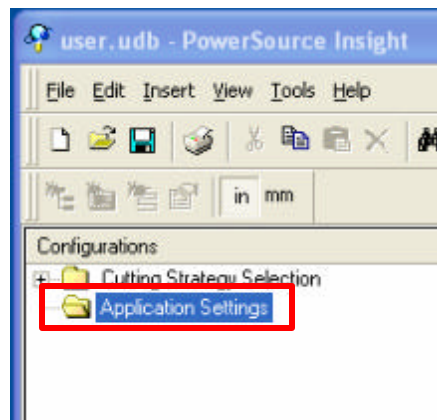
Step 2: Start the application PowerSource Insight. Choose *Start->All Programs->Prospector->PowerSource Insight*.



Step 3: In PowerSource Insight choose the entry *Open* from File pull-down menu and then select the file **user.udb** and click Open.



Step 4: Click on the entry *Application Settings* under Configurations.



Step 5: On the right hand side select the entry “Install Path”+”user\jobs_r” for the Remote Job Directory and replace it with the new location of the jobs_r folder. In our example the jobs_r folder is on the “h” drive.

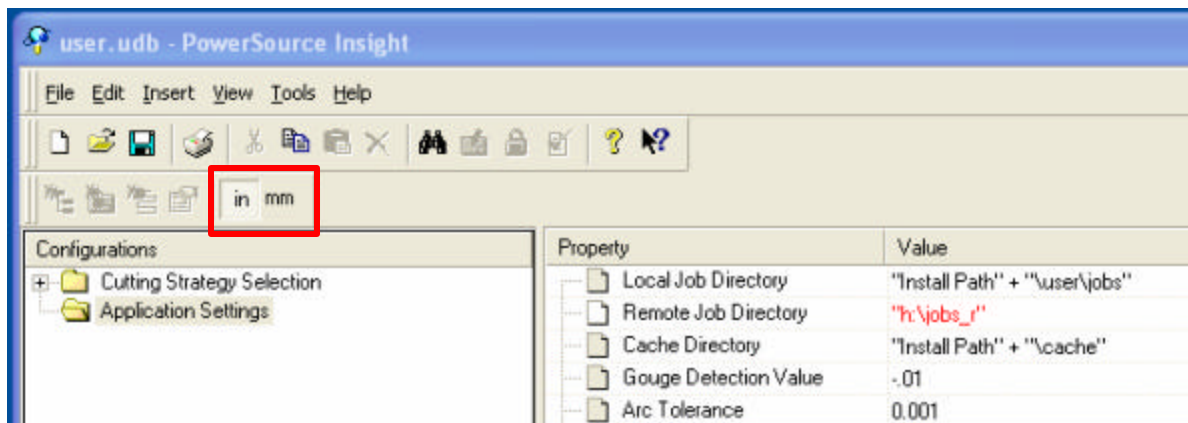
Property	Value	Property	Value
Local Job Directory	"Install Path" + "\user\jobs"	Local Job Directory	"Install Path" + "\user\jobs"
Remote Job Directory	"Install Path" + "\user\jobs_r"	Remote Job Directory	"h:\jobs_r"
Cache Directory	"Install Path" + "\cache"	Cache Directory	"Install Path" + "\cache"
Gouge Detection Value	-.01	Gouge Detection Value	-.01
Arc Tolerance	0.001	Arc Tolerance	0.001
Filter Surface Data	"No"	Filter Surface Data	"No"
Filter Surface Tolerance	0.001	Filter Surface Tolerance	0.001

Before

After

Note: When typing in the path don't forget to enclose the path with double quotes. For example “h:\jobs_r”

Step 6: Make sure you change both **in** (inch) and **mm** (metric) when changing the location of the jobs_r folder.



Step 7: Choose the entry Save from the File pull-down menu and then exit PowerSource Insight.