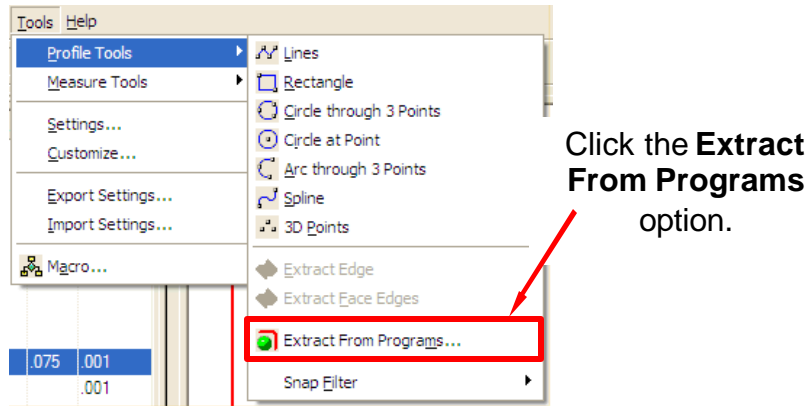


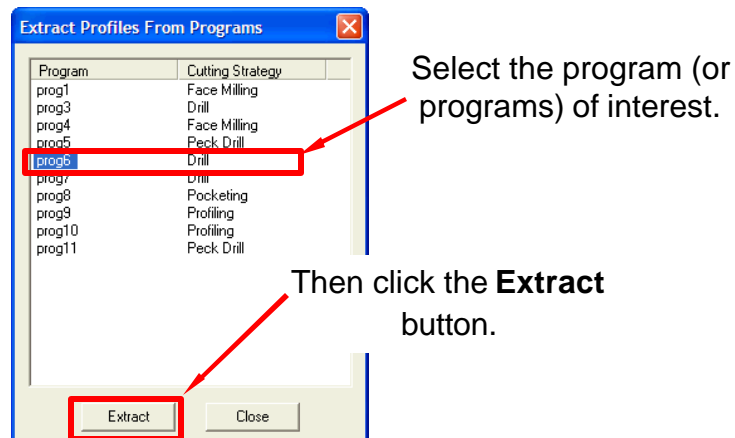
How to Reuse Profiles from Existing 2D Programs

Prospector allows you to reuse profiles associated with existing 2D programs in the project. This saves you from having to recreate these profiles when you make new 2D programs. To reuse profiles and other related geometry from existing 2D programs, do the following steps:

Step 1: Select the entry **Profile Tools** from the **Tools** pull-down menu and then click **Extract From Programs**.



Step 2: In the *Extract Profiles From Programs* dialog, select the program(s) you wish to extract the profiles from and click the **Extract** button. Note that when you select a program, a preview of the profiles to be extracted will appear on the screen.



Now you can use these profiles when you create new 2D programs.