



Version 6.6 Service Pack 1 Release Summary

December 2008

Overview

Prospector 6.6 Service Pack 1 is an update release that contains important software corrections to rectify problems that have been reported against Version 6.6. This release summary describes the software changes.

Installation Notes

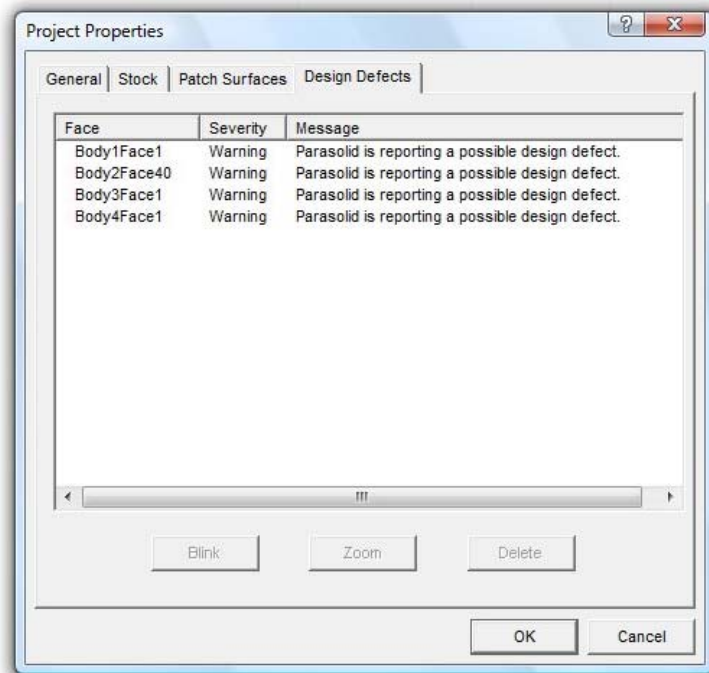
The download self-installing executable is designed to upgrade a computer with Version 6.6 already installed. If you have not installed Version 6.6, you must first install the full version from the CD then install this service pack.

DO NOT INSTALL THE SERVICE PACK ON A COMPUTER RUNNING VERSIONS OLDER THAN 6.6.

Parasolid Compatibility

Prospector 6.6 would fail to import certain Parasolid files (*.x_t, *.x_b) if they were written by an older version of the Parasolid kernel software. This problem has been repaired in this service pack to ensure that all older versions of the Parasolid file format are compatible with Prospector.

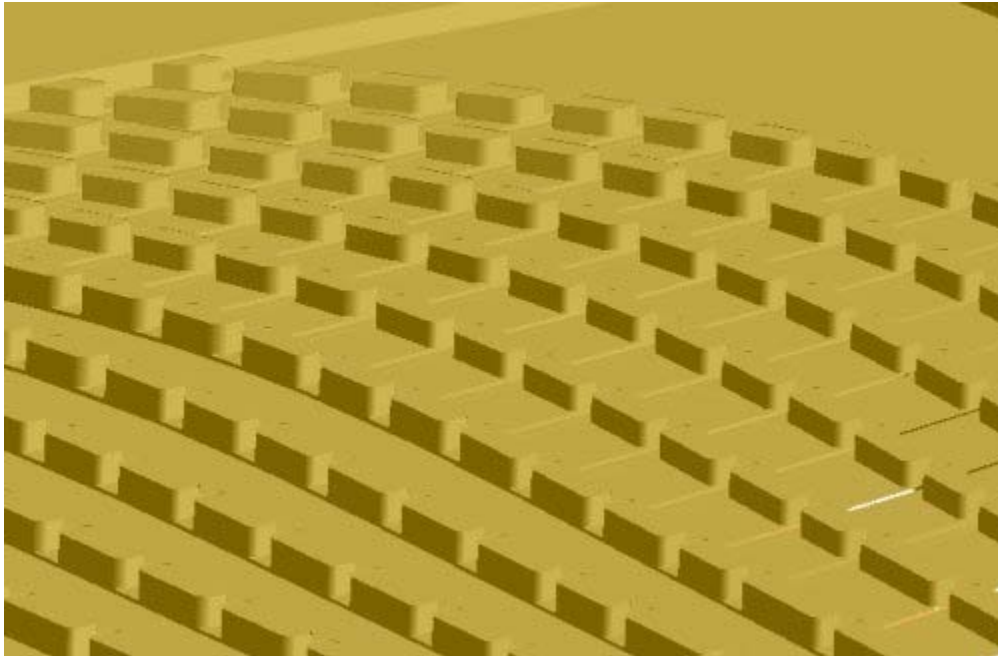
When it is not possible to retrieve critical math data from a Parasolid model because of an error in the solid model, the problematic entities will be shown in the Design Defects tab of the Project Properties dialog when the model is imported:



These are problem reported by the Parasolid software - not by Prospector. Inspect the problem entities carefully. You may need to repair the model in your CAD system prior to programming.

3D Z-Planar Machining

Part data with numerous protrusions produces many discrete islands when a Z-Planar program is generated. In the case shown below is an extreme example.



In these extreme cases, many thousands of islands are generated to form the cutter path. In previous versions of Prospector, program generation would be extremely slow and usually consume an inordinate amount of computer memory. In some cases, the program could crash. This service pack mitigates these problems by using applying more suitable techniques to address situations like this.

Discrete cases of Z-Planar program generation failing to build and/or causing the program to crash that succeeded to generate in versions prior to 6.6 have been addressed by this service pack.

Customer Closed Track IDs

Track is the electronic database system that records all customer and internally generated requests for corrections and enhancements. When you report a problem or request an enhancement, our customer service representatives will input your request into the Track system and give you a Track ID number. When we complete a release, we set the status on all records in the Track database that have been addressed to closed. The following is a list of closed customer Track IDs for this release.

Track ID	Synopsis
6624	Program crash when processing a remachining job with a window that covers the entire part surface.
6625	Prospector is crashing when trying to import a Parasolid data file.
6626	Prospector is failing to generate a 3D program using this Parasolid data file.
6627	2D profiles do not highlight properly when the boxes are checked or un-checked on the feature selection page of the New 2D Program wizard.
6629	Spiral clearing for Z-Planar With Clear is failing to produce a cutter path for this part data.

6630	The Re-number Programs feature will fail if not all programs in the setup have a corresponding CL data file.
6632	A program crash occurs if a Z-Planar With Clear program contains > 67,000 islands.
6633	Updating a project a 2nd time using the plug-in application for ToolDesigner fails to update the project.
6634	Programs that generated in previous versions of Prospector are failing to generate in 6.6.
6636	What's This help feature in PowerSource Insight & tooling is not working.
6638	When specifying 1 level to cut for a pocketing program, the pocked is being machined twice.
6640	A library post processor is failing to generate any output.
6641	Prospector is failing to generate a 3D Z-Planar program.
6643	Remachining program is generating invalid numerical output in the CL data file.
6645	This IGES does not import into Prospector properly.
6646	The graphic highlight for choosing edges, measure arc, etc. does not show the geometry when using a black background
6648	Prospector is skipping some levels in the first program of this remachining sequence.
6649	Lace program is gouging and Prospector is not reporting it.